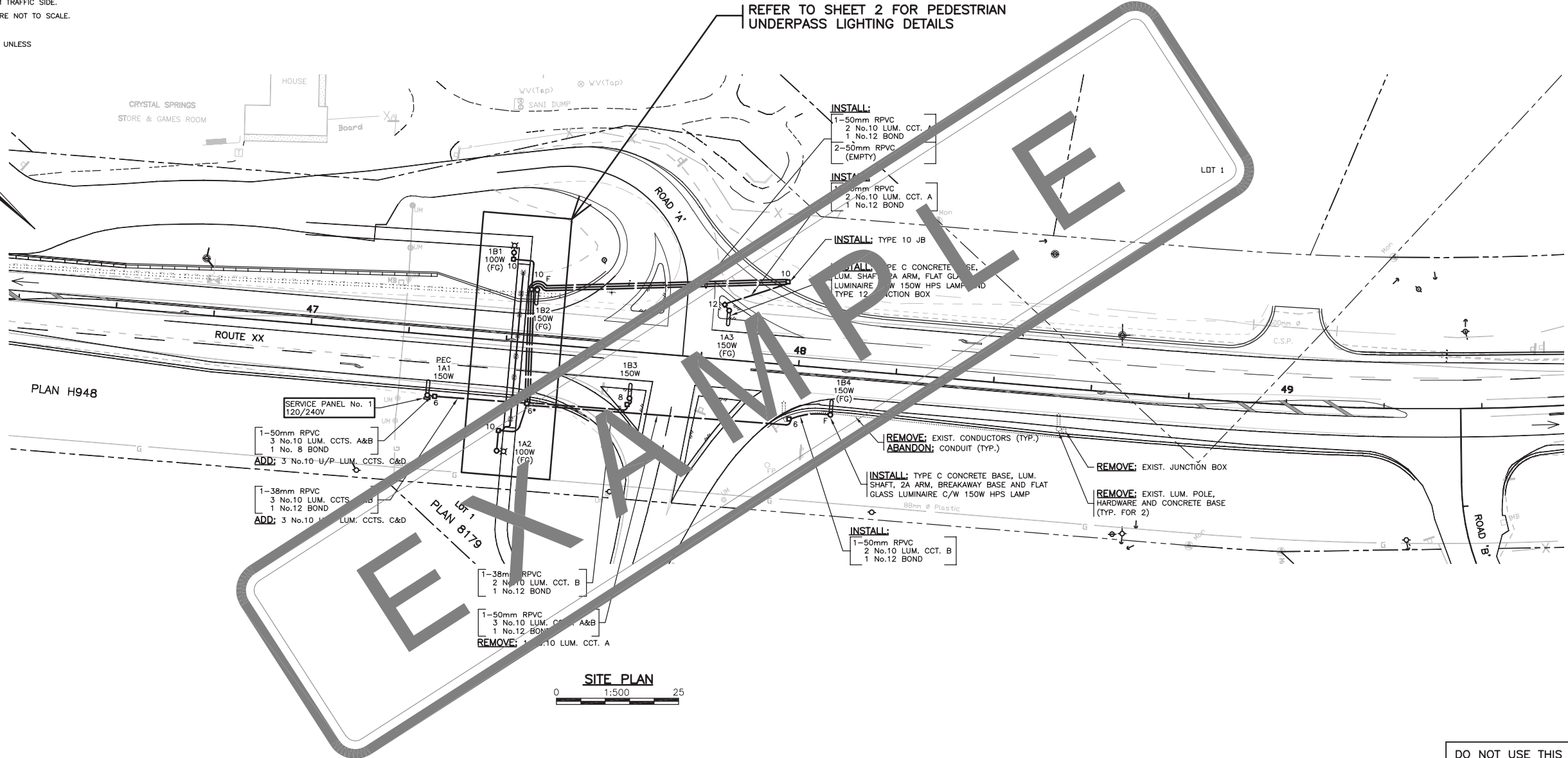


NOTES

- ALL WORK SHALL BE DONE IN ACCORDANCE WITH THE CURRENT STANDARDS AND THE ELECTRICAL SPECIAL PROVISIONS ISSUED WITH THIS CONTRACT.
- CONDUCTORS FROM JUNCTION BOX TO LUMINAIRE POLE SHALL BE:
2 No.10 RW90 } 50mm RPVC (UNLESS OTHERWISE NOTED)
1 No.12 RW90 }
- ALL CONDUITS FROM JUNCTION BOXES TO BASES ARE TO BE 50mm RPVC.
- JUNCTION BOXES SHALL BE POSITIONED BEHIND OR, AS AN ALTERNATIVE, TO THE SIDE, BUT NOT IN FRONT OF POLES.
- LUMINAIRE NUMBERING EXAMPLE: 1A2
SERVICE No. - 1 CCT. LETTER - A LUM. No. - 2
- WHERE POSSIBLE, POLES SHALL BE POSITIONED WITH THE HANDHOLE IN THE BACK OR IF NOT POSSIBLE, ON THE DOWNSTREAM TRAFFIC SIDE.
- ALL CONCRETE BASES AND JUNCTION BOX SYMBOLS ARE NOT TO SCALE.
- ALL NEW JUNCTION BOXES SHALL HAVE STEEL LIDS.
- ALL CONDUCTORS SHALL BE RW90 STRANDED COPPER UNLESS SHOWN OTHERWISE.

REFER TO SHEET 2 FOR PEDESTRIAN UNDERPASS LIGHTING DETAILS



DO NOT USE THIS DRAWING FOR PAVEMENT MARKINGS

ALL DIMENSIONS ARE IN MILLIMETERS EXCEPT WHERE NOTED

ALL EQUIPMENT IS EXISTING EXCEPT WHERE NOTED

POSTED SPEED LIMIT 100 km/h ON ROUTE 97
POSTED SPEED LIMIT 50 km/h ON LAC LA HACHE PARK

LEGEND

DMD & Associates Ltd.
1B 19044 95A Avenue, Surrey, BC, Canada V4N 4P2
www.dmdeng.com 604/888-9010
office@dmdeng.com Fax 604/888-9011

DESIGNED BY _____	DATE _____	CHECKED BY _____	DATE _____
REVISIONS			
REV	DATE	DESCRIPTION	DRAWN

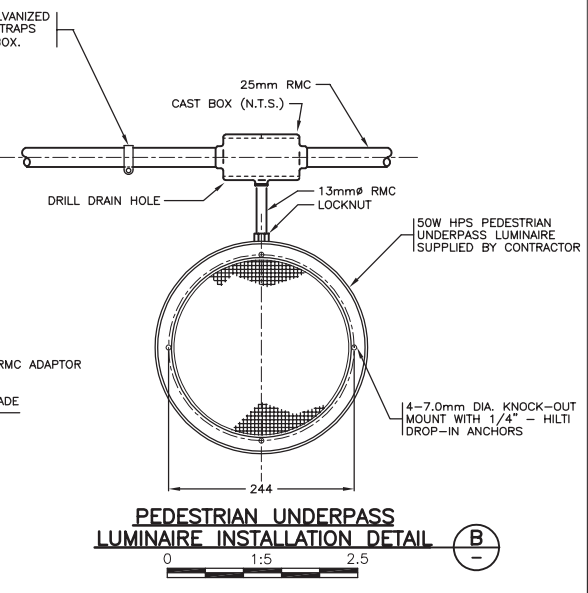
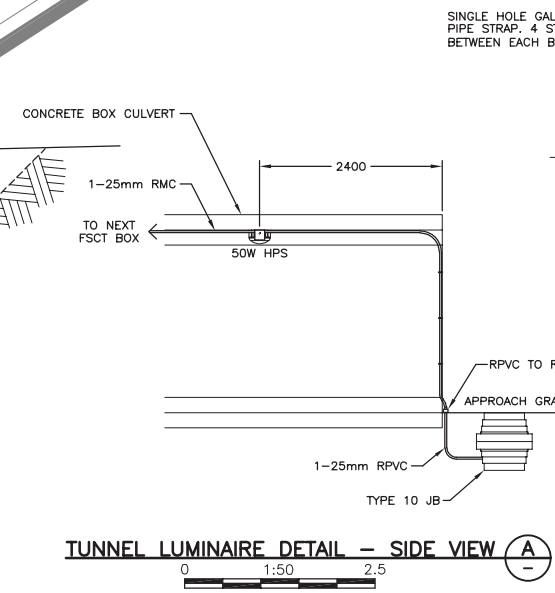
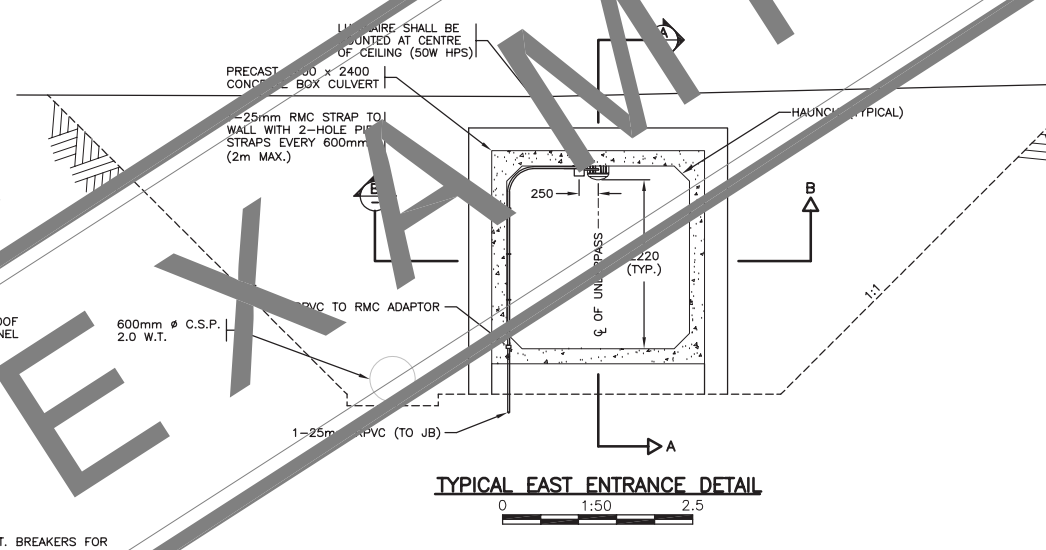
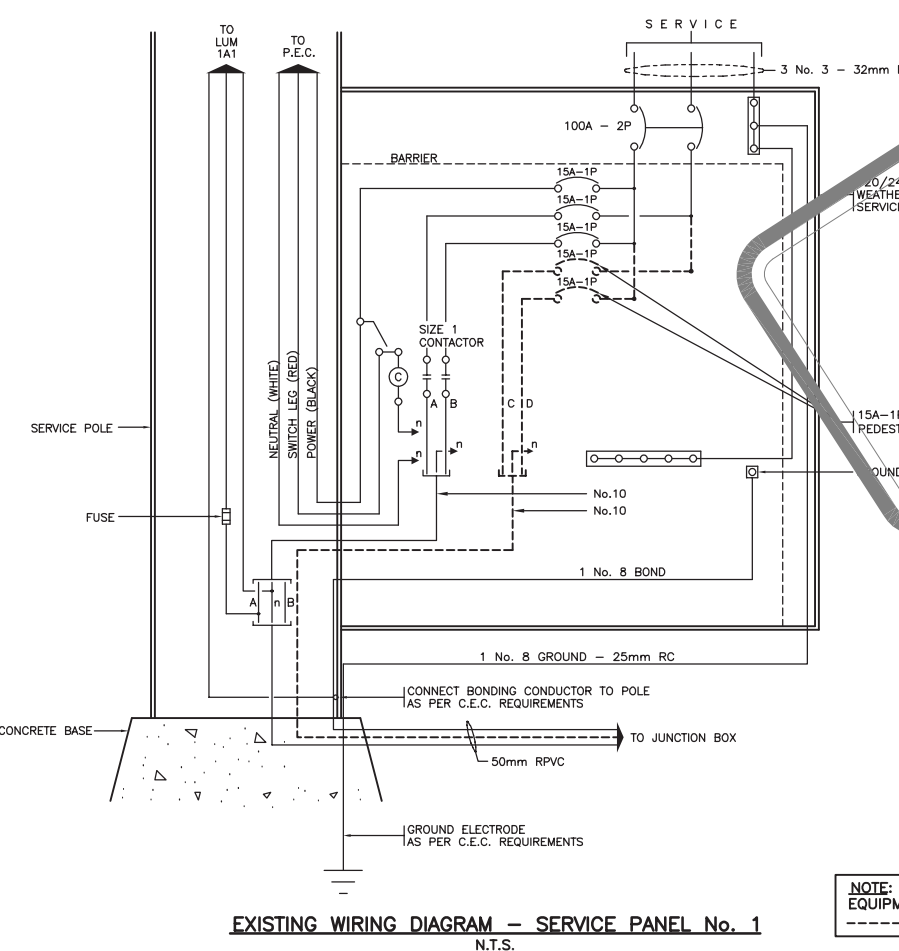
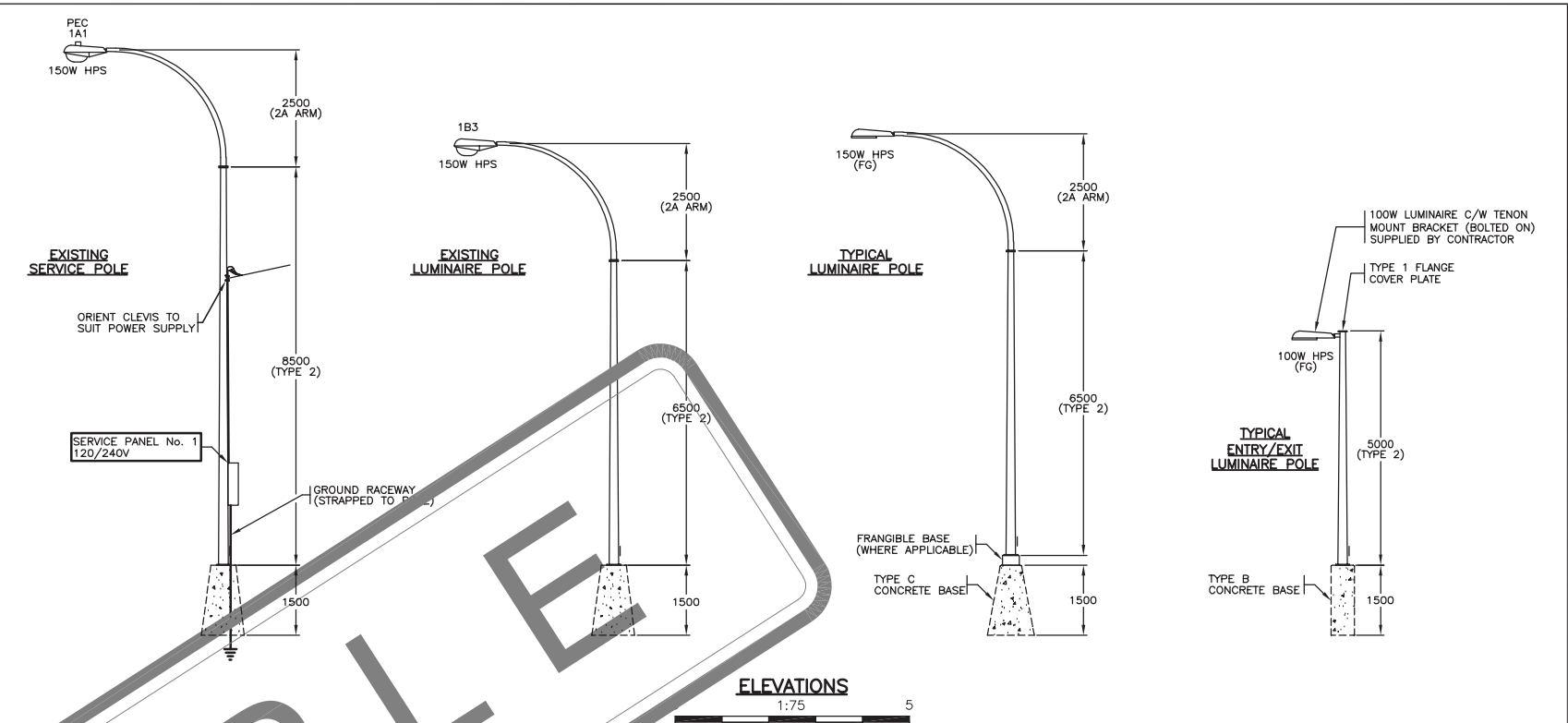
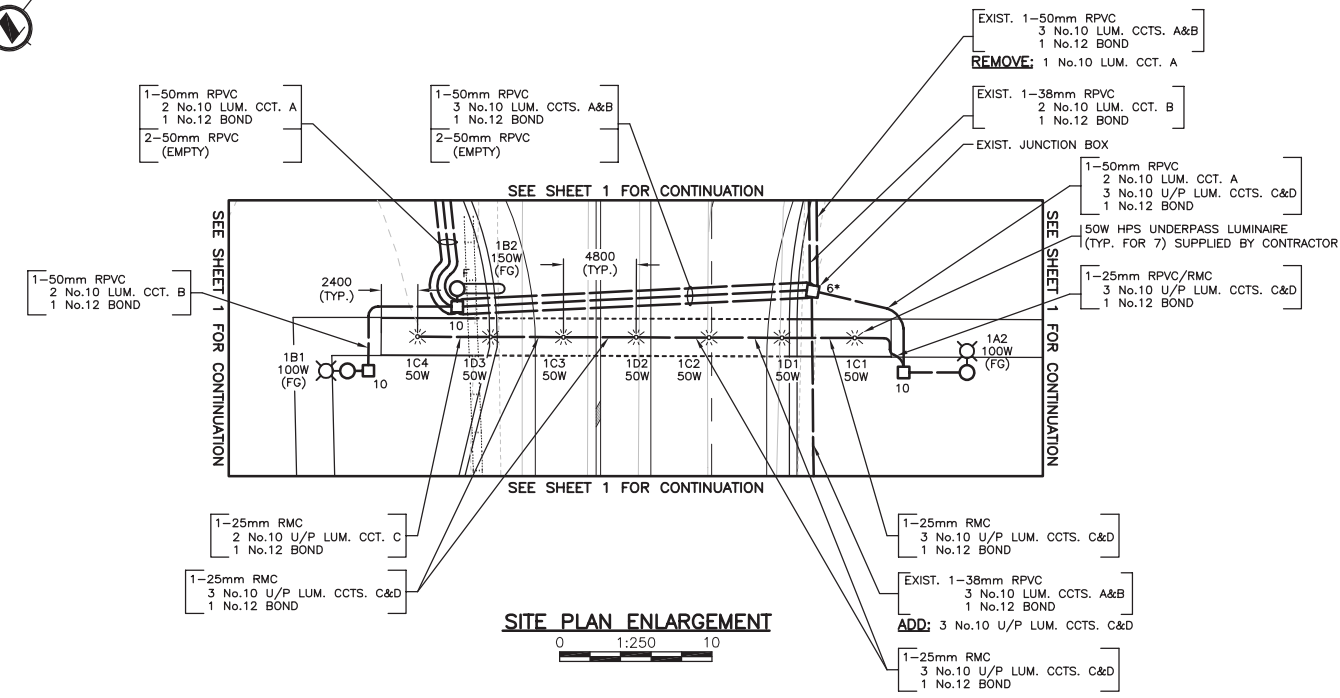
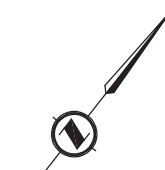
LIGHTING INSTALLATION

SITE PLAN - NOTES

ELECTRICAL ENGINEER OF RECORD (FOR CURRENT REVISION)

DATE _____

SHEET NUMBER	SITE CODE	HWY DIST	REGION	DRAWING NUMBER
SHEET 1 OF 2				APPENDIX C-1



- NOTES FOR UNDERPASS LUMINAIRE:** (SUPPLIED BY CONTRACTOR)
- ALL LUMINAIRE SHALL BE BONDED.
 - CONDUCTORS FROM FSCT BOX TO LUMINAIRE SHALL BE:
2 No.10 RW90 - 13mm RMC (UNLESS OTHERWISE NOTED)
1 No.12 RW90
 - LUMINAIRE FIXTURES SHALL BE TERRAPIN 11" (T11) VANDAL RESISTANT, BORDER STYLE, 11" IN DIAMETER, CLEAR PRISMATIC LENS C/W 50W HPS LAMP. (COOPER LIGHTING CAT. No. TRB11-C-150HPS-DT-BK).

ALL EQUIPMENT IS NEW EXCEPT WHERE NOTED

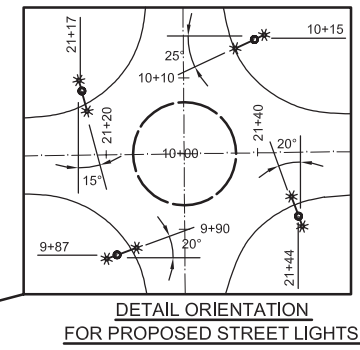
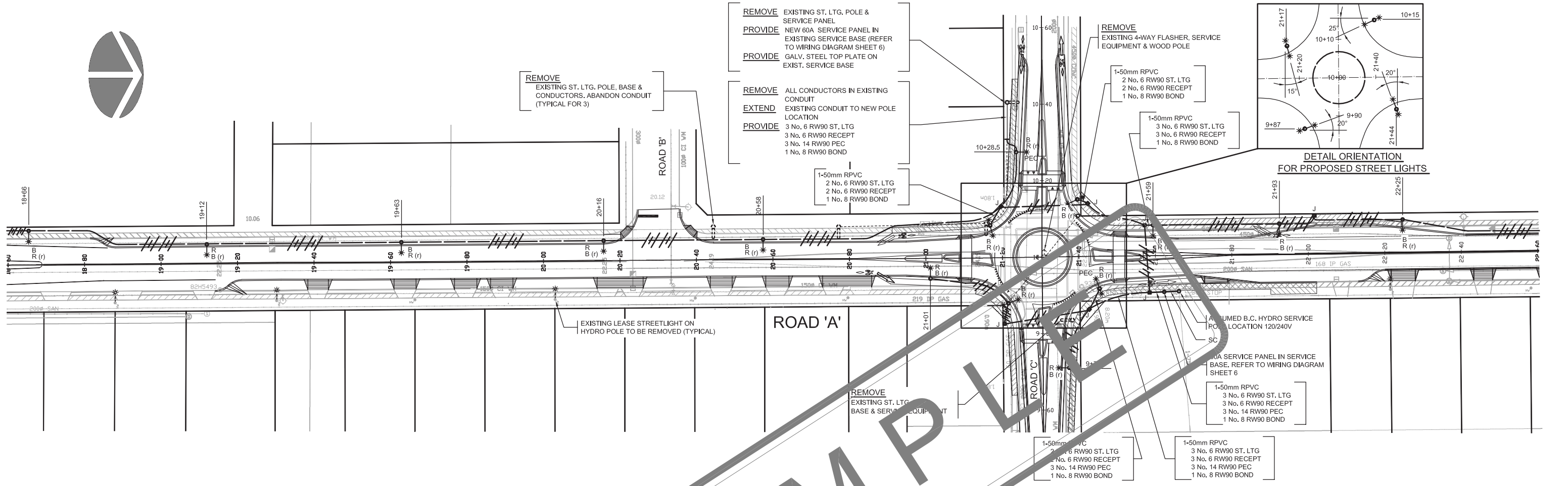
REFER TO SHEET 1 FOR NOTES
ALL DIMENSIONS ARE IN MILLIMETERS EXCEPT WHERE NOTED

CONDUCTOR COLOUR CODE	
ITEM	CONDUCTOR COLOUR
LUMINAIRE CCTS. A & C	RED
LUMINAIRE CCTS. B & D	BLACK
NEUTRAL	WHITE
GROUND/BOND	GREEN

NOTE:
EQUIPMENT SHOWN:
----- TO BE ADDED

DMD		DMD & Associates Ltd.	
DESIGNED BY _____ DATE _____		CHECKED BY _____ DATE _____	
<p>1B 19044 95A Avenue, Surrey, BC, Canada V4N 4P2 www.dmdeng.com 604/888-9010 office@dmdeng.com Fax 604/888-9011</p>			
REV	DATE	DESCRIPTION	DRAWN

LIGHTING INSTALLATION				
SITE PLAN ENLARGEMENT - WIRING DIAGRAM - ELEVATIONS				
ELECTRICAL ENGINEER OF RECORD (FOR CURRENT REVISION)				
DATE _____				
SHEET NUMBER	SITE CODE	HWY DIST	REGION	DRAWING NUMBER
SHEET 2 OF 2				APPENDIX C-2



REMOVE EXISTING ST. LTG. POLE & SERVICE PANEL
PROVIDE NEW 60A SERVICE PANEL IN EXISTING SERVICE BASE (REFER TO WIRING DIAGRAM SHEET 6)
PROVIDE GALV. STEEL TOP PLATE ON EXIST. SERVICE BASE

REMOVE ALL CONDUCTORS IN EXISTING CONDUIT
EXTEND EXISTING CONDUIT TO NEW POLE LOCATION
PROVIDE 3 No. 6 RW90 ST. LTG
 3 No. 6 RW90 RECEPT
 3 No. 14 RW90 PEC
 1 No. 8 RW90 BOND

REMOVE EXISTING ST. LTG. POLE, BASE & CONDUCTORS. ABANDON CONDUIT (TYPICAL FOR 3)

REMOVE EXISTING 4-WAY FLASHER, SERVICE EQUIPMENT & WOOD POLE

1-50mm RPVC
 2 No. 6 RW90 ST. LTG
 2 No. 6 RW90 RECEPT
 1 No. 8 RW90 BOND

1-50mm RPVC
 3 No. 6 RW90 ST. LTG
 3 No. 6 RW90 RECEPT
 1 No. 8 RW90 BOND

1-50mm RPVC
 2 No. 6 RW90 ST. LTG
 2 No. 6 RW90 RECEPT
 1 No. 8 RW90 BOND

1-50mm RPVC
 3 No. 6 RW90 ST. LTG
 3 No. 6 RW90 RECEPT
 3 No. 14 RW90 PEC
 1 No. 8 RW90 BOND

1-50mm RPVC
 2 No. 6 RW90 ST. LTG
 2 No. 6 RW90 RECEPT
 3 No. 14 RW90 PEC
 1 No. 8 RW90 BOND

1-50mm RPVC
 3 No. 6 RW90 ST. LTG
 3 No. 6 RW90 RECEPT
 3 No. 14 RW90 PEC
 1 No. 8 RW90 BOND

LEGEND

- PROPOSED DAVIT STREETLIGHT POLE (7.5m-350W-M.H.) FLAT GLASS IES TYPE 2 MCO DISTRIBUTION C/W 50W MH PEDESTRIAN LUMINAIRE & DECORATIVE RECEPTACLE
- PROPOSED DAVIT STREETLIGHT POLE (7.5m - 350W M.H.) FLAT GLASS IES TYPE 3 MCO DISTRIBUTION C/W DECORATIVE RECEPTACLE
- PROPOSED DAVIT STREETLIGHT POLE (9.0m - 250W M.H.) FLAT GLASS IES TYPE 3 MCO DISTRIBUTION C/W DECORATIVE RECEPTACLE
- PROPOSED DAVIT STREETLIGHT POLE (9.0m-150W H.P.S.) FLAT GLASS IES TYPE 2 MCO DISTRIBUTION C/W DECORATIVE RECEPTACLE
- EXISTING LEASE LIGHT ON HYDRO POLE TO BE REMOVED (BY BCH)
- EXISTING DAVIT STREETLIGHT POLE
- PROPOSED LARGE ROUND PLASTIC JUNCTION BOX (2 SECTIONS DEEP C/W STEEL LID)
- EXISTING JUNCTION BOX
- PROPOSED TREE RECEPTACLE
- R (r)** LUMINAIRE OR RECEPTACLE ON RED PHASE CONDUCTOR (r) DENOTES RECEPTACLE
- B (r)** LUMINAIRE OR RECEPTACLE ON BLACK PHASE CONDUCTOR (r) DENOTES RECEPTACLE
- PROPOSED 3 No. 6 RW90 ST. LTG., 3 No. 6 RW90 RECEPT. AND 1 No. 8 RW90 BOND IN 50mm R.PVC
- PROPOSED 2 No. 6 RW90 ST. LTG., 2 No. 6 RW90 RECEPT. AND 1 No. 8 RW90 BOND IN 50mm R.PVC CONDUIT
- PROPOSED 3 No. 6 RW90 RECEPT. AND 1 No. 8 RW90 BOND IN 50mm R.PVC CONDUIT
- EXISTING CONDUIT & CONDUCTORS
- PROPOSED 2C No. 14 TECK 90 CABLE C/W BOND WIRE
- PROPOSED 50mm R.PVC CONDUIT ONLY
- PROPOSED 50mm R.PVC SERVICE CONDUIT AND CONDUCTORS
- PROPOSED STUB OUT & CAP 50mm R.PVC FOR FUTURE EXTENSION

NOTES

1. ALL STREET LIGHTING WORK SHALL BE DONE IN ACCORDANCE WITH THE CURRENT STANDARDS AND THE ELECTRICAL SPECIFICATIONS ISSUED WITH THIS CONTRACT.
2. CONDUCTORS IN THE POLE SHALL BE: No.12 RW90 X-LINE. ALL LUMINAIRE SHALL BE BONDED WITH No. 12 RW90 (GREEN)
3. A TROUBLE-EEA WEATHERPROOF FUSE HOLDER, C/W A 100 AMP KTK FUSE AND 2 'L' TYPE INSULATING BOLTS SHALL BE INSTALLED IN EACH LUMINAIRE & RECEPTACLE LIVE CONDUCTOR IN THE HANDS AND J.B.
4. ALL CONDUCTORS SHALL BE STRANDED COPPER, TYPE RW90 INSULATED AND COLOUR CODED.
5. ALL CONDUITS SHALL BE BURIED 100mm DEEP A 'BURIED CABLE' MARKER TAPE SHALL BE INSTALLED IN ALL TRENCHES.
6. CONTRACTOR TO ARRANGE FOR EXACT SERVICE LOCATION PRIOR TO CONSTRUCTION.
7. CONTRACTOR SHALL OBTAIN ALL PERMITS AND LICENSES PRIOR TO CONSTRUCTION.
8. ALL STREET LIGHTS ARE TO BE 1.0M CLEAR OF ALL DRIVEWAYS.
9. ALL LAMPS SHALL BE CLEAR. METAL HALIDE LAMPS SHALL BE HORIZONTAL BURN & 3000 KELVIN.
10. CABLE FROM J.B. TO TREE RECEPTACLES SHALL BE 3 No. 14 TECK 90 CABLE C/W BOND WIRE.
11. CONTRACTOR SHALL LOCATE AND AVOID ALL UNDERGROUND SERVICES.
12. SPLICES IN JUNCTION BOXES SHALL USE SELF-BOLT STYLE CONNECTORS THEN COMPLETELY COVER SPLICE WITH TAPE THEN DUCT SEAL TO FORM A BALL OVER CONNECTION. DUCT SEAL TO BE THICK ENOUGH TO PREVENT SHARP ENDS OF CONDUCTORS AND/OR POINTS OF CONNECTOR FROM PROTRUDING THROUGH TAPED CONNECTION. ONCE DUCT SEAL HAS BEEN APPLIED, TAPE SPLICE WITH SELF-HOLDING AND PVC TAPE.
13. ALL NEW STREETLIGHT POLES AND SERVICE BASES SHALL BE HOT DIPPED GALVANIZED AND POWDER COATED. COBRA HEAD LUMINAIRE SHALL BE WET PAINTED OR FACTORY PAINTED BLACK TO MATCH POLES.
14. THE CONTRACTOR SHALL REPLACE ALL ASPHALT, CONCRETE & LANDSCAPING REMOVED DURING CONSTRUCTION OF LIGHTING SYSTEM.
15. PAINTING OF EXISTING GALVANIZED POLES SHALL BE AS FOLLOWS:
 - 1) CLEAN POLE WITH SOLVENT, LET FULLY DRY.
 - 2) APPLY 1 COAT OF APPROPRIATE PRIMER TO SUIT FINISH COAT.
 - 3) PROVIDE 2 COATS OF SEMI-GLOSS BLACK PAINT.

MAXIMUM LOAD PER POLE RECEPTACLE SHALL BE 100W

CHECK BEFORE YOU DIG
 CONTRACTOR SHALL REFER TO MUNICIPAL RECORD / CIVIL DESIGN DRAWINGS FOR ALL OTHER UTILITIES, SERVICE LOCATIONS, AND DETAILS. THE EXACT LOCATION OF THESE UTILITIES SHALL BE DETERMINED ON SITE BY THE CONTRACTOR.

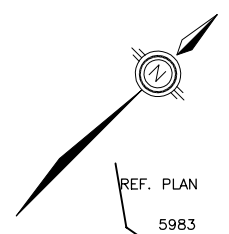
CONTRACTOR SHALL CONFIRM ON SITE PRIOR TO CONSTRUCTION THAT POLES & EQUIPMENT WILL MEET WCB CLEARANCE REQUIREMENTS FOR OVERHEAD PRIMARY AND SECONDARY LINES

DMD
DMD & Associates Ltd.
 18 19044 95A Avenue
 Surrey, BC, Canada V4N 4P2
 www.dmdeng.com office@dmdeng.com 604/888-9010 Fax 604/888-9011

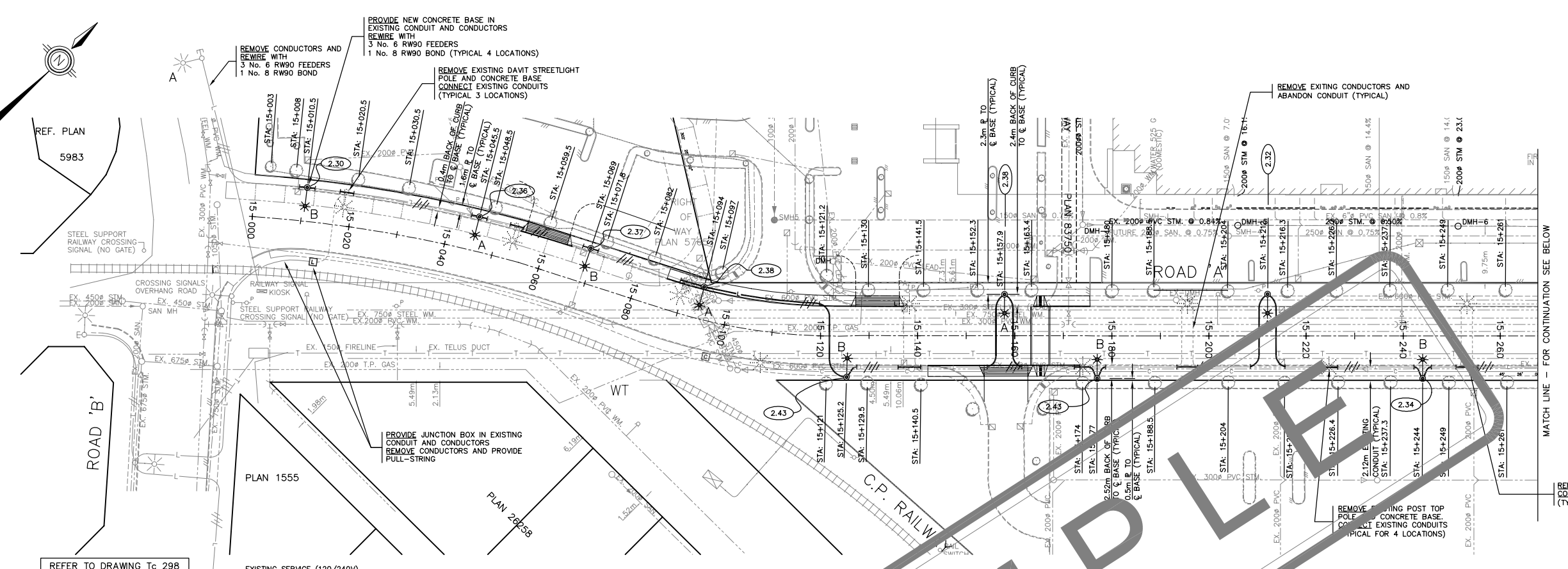
DESIGNED	
DRAWN	
CHECKED	
DATE	
SCALE:	1:500
SEAL	

No.	DATE	BY	CHK'D	REVISION

DRAWING REFERENCE		PROJECT No.		SHEET No.	
				APPENDIX C-3	
STREET LIGHTING		REVISION			



REF. PLAN
5983



SITE PLAN
0 1:500 25

REFER TO DRAWING Tc 298
FOR CONTINUATION

MATCH LINE - FOR CONTINUATION SEE BELOW

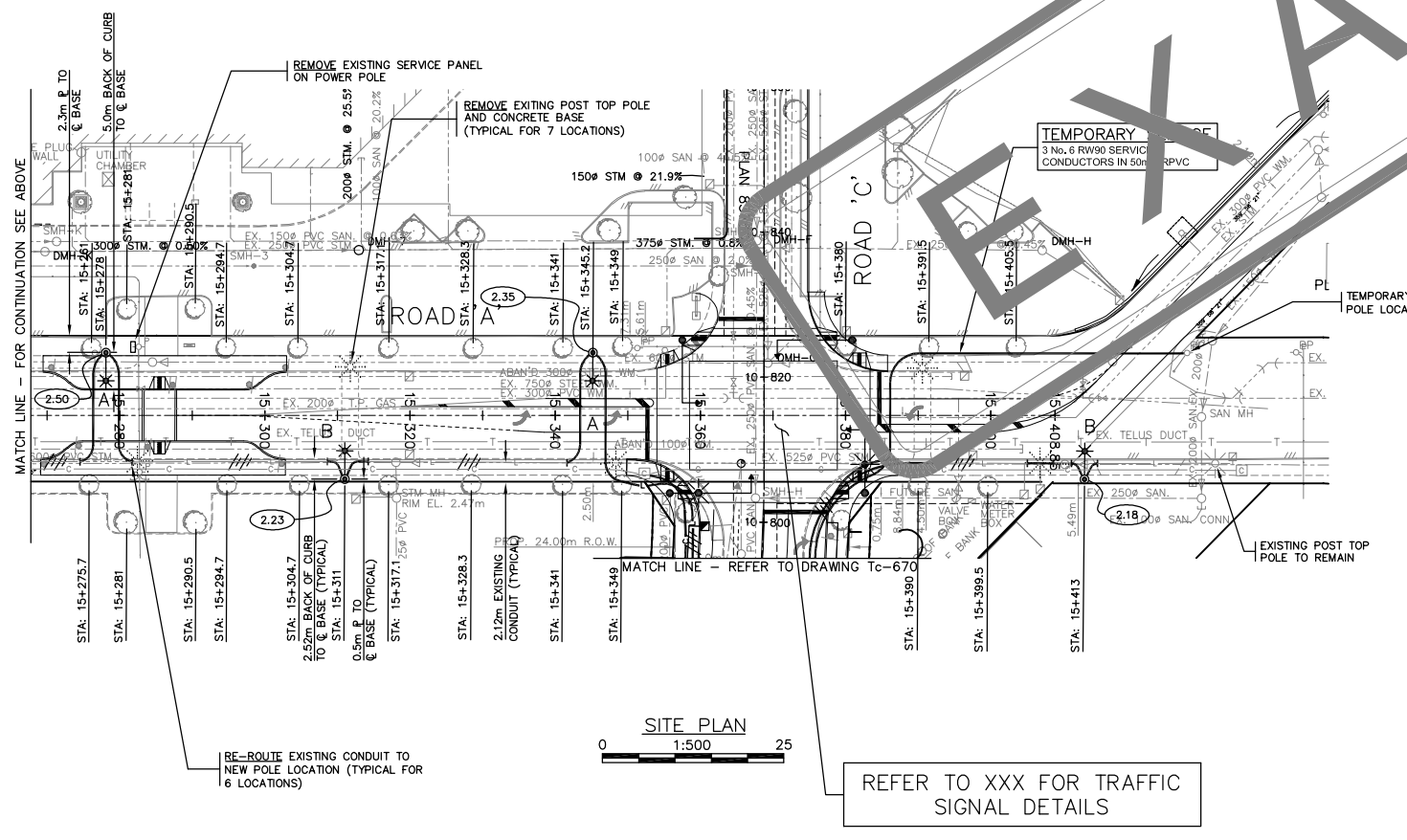
TEMPORARY WORK
CONTRACTOR SHALL PROVIDE 4 ANCHOR BOLT ADAPTOR PLATES FOR RELOCATION OF EXISTING POST TOP POLES ON NORTH SIDE. REMOVAL OF ADAPTOR AND INSTALLATION OF NEW POLES SHALL OCCUR ONCE BC HYDRO POLE LINE IS REMOVED

REFER TO SHEET 2 FOR
LEGEND AND NOTES

REMOVE ALL EXISTING STREET
LIGHTING CONDUCTORS AND
REWIRE AS SHOWN

RETURN ALL POLES AND LUMINAIRES BEING
REMOVED TO CITY WORKS YARD. DISPOSE OF
OLD CONCRETE BASES OFF-SITE.

CHECK BEFORE YOU DIG
CONTRACTOR SHALL REFER TO MUNICIPAL RECORD / CIVIL
DESIGN DRAWINGS FOR ALL OTHER UTILITIES, SERVICE
LOCATIONS, AND DETAILS. THE EXACT LOCATION OF
THESE UTILITIES SHALL BE DETERMINED ON SITE
BY THE CONTRACTOR.



SITE PLAN
0 1:500 25

REFER TO XXX FOR TRAFFIC
SIGNAL DETAILS

RE-ROUTE EXISTING CONDUIT TO
NEW POLE LOCATION (TYPICAL FOR
6 LOCATIONS)

DMD & Associates Ltd.
18 19044 95A Avenue
Surrey, BC, Canada V4N 4P2
www.dmdeng.com 604/888-9010
office@dmdeng.com Fax 604/888-9011

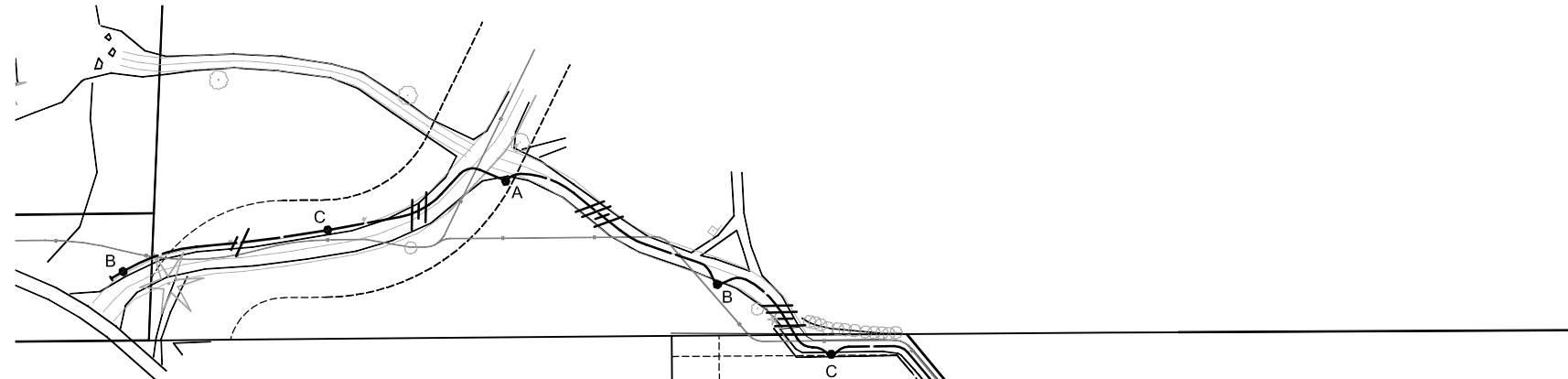
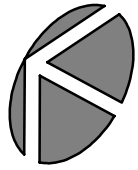
DESIGNED	
DRAWN	
CHECKED	
DATE	
SCALE:	AS SHOWN
SEAL	

No.	DATE	BY	CHK'D	REVISION

STREET LIGHTING

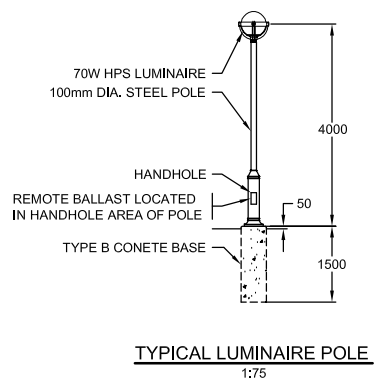
PROJECT No. SHEET No. APPENDIX C-4 REVISION

DRAWING REFERENCE



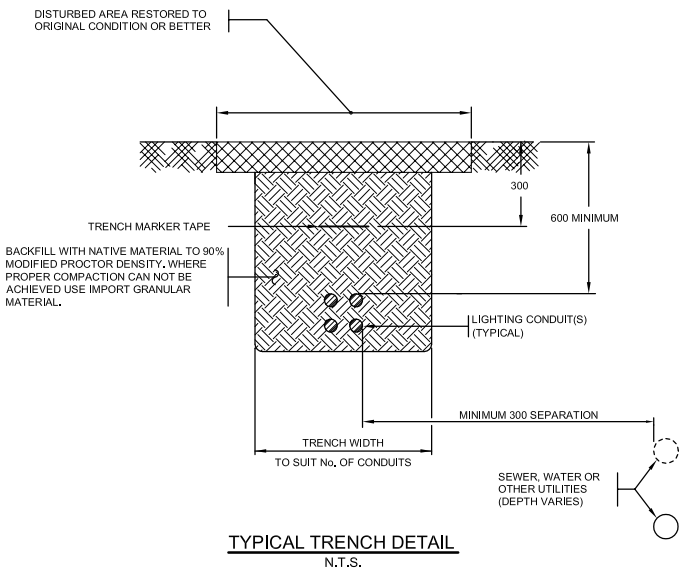
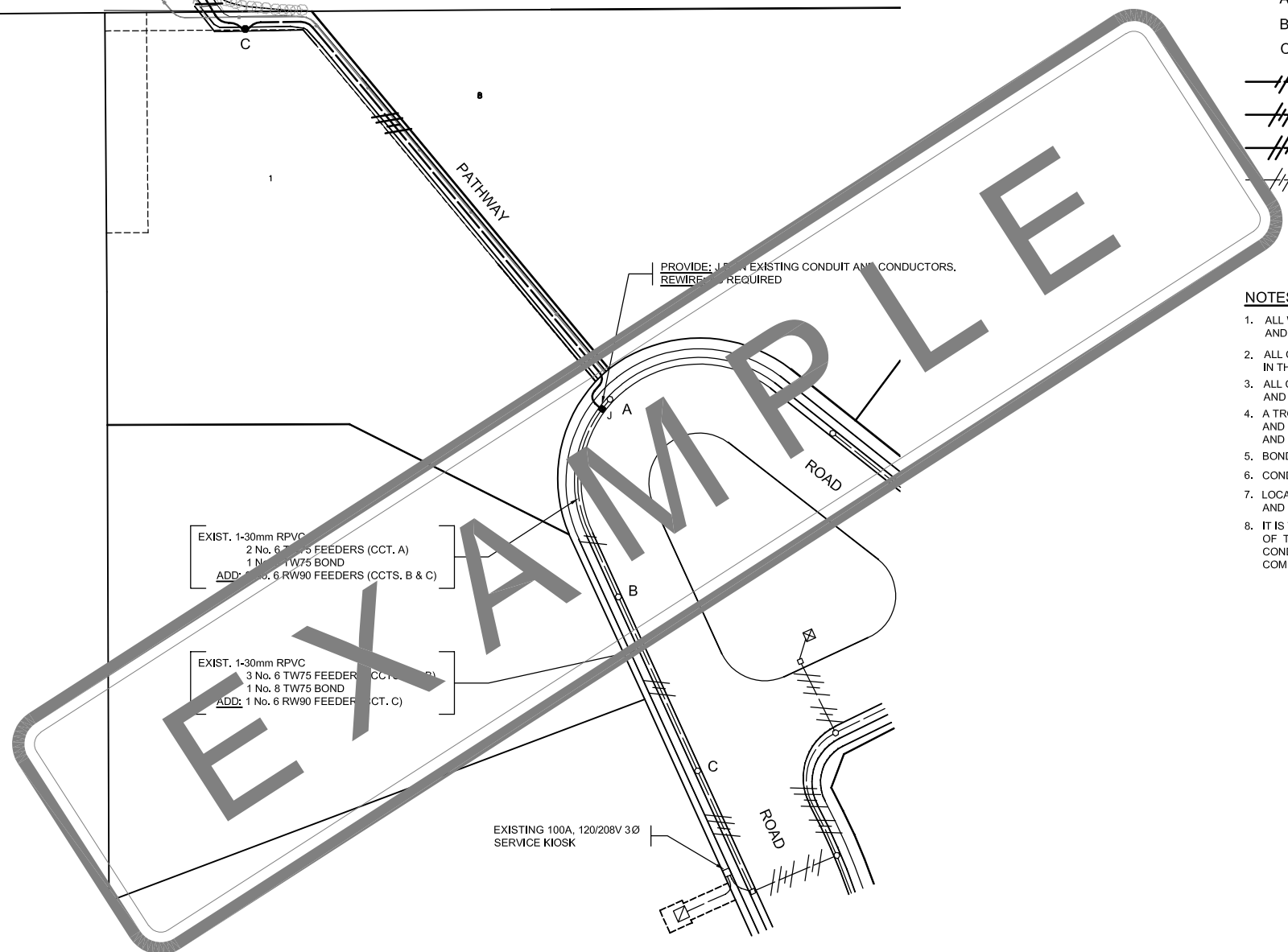
LEGEND

- PROPOSED LUMINAIRE POLE (4.0m-70W H.P.S.)
- EXISTING LUMINAIRE POLE TO REMAIN
- J PROPOSED CONCRETE JUNCTION BOX, 2 SECTIONS DEEP C/W BRICK BASE AND GALVANIZED STEEL LID.
- A LUMINAIRE ON RED PHASE CONDUCTOR
- B LUMINAIRE ON BLACK PHASE CONDUCTOR
- C RECEPTACLE ON BLUE PHASE CONDUCTOR
- PROPOSED 2 No. 6 RW90 LTG. AND 1 No. 8 RW90 BOND IN 30mm RPVC
- PROPOSED 3 No. 6 RW90 LTG. AND 1 No. 8 RW90 BOND IN 30mm RPVC
- PROPOSED 4 No. 6 RW90 LTG. AND 1 No. 8 RW90 BOND IN 30mm RPVC
- EXISTING CONDUIT AND CONDUCTORS TO REMAIN



NOTES

1. ALL WORK SHALL BE DONE IN ACCORDANCE WITH CITY SPECIFICATIONS AND STANDARDS UNLESS OTHERWISE NOTED ON PLAN.
2. ALL COMMON CIRCUIT WIRING SHALL BE TAGGED & TY-RAPPED AS DETAILED IN THE MMCD.
3. ALL CONDUCTORS SHALL BE STRANDED COPPER, TYPE RW90 INSULATED AND COLOUR CODED.
4. A TRON HEB AA WEATHERPROOF FUSE HOLDER, C/W A 5A BUSS KTK FUSE AND 2 'L' TYPE INSULATING BOOTS, SHALL BE INSTALLED IN EACH LUMINAIRE AND RECEPTACLE LIVE CONDUCTOR IN THE HANDHOLE.
5. BOND ALL STEEL JUNCTION BOX LIDS.
6. CONDUITS SHALL BE BURIED A MINIMUM DEPTH OF 0.6m.
7. LOCATION OF ALL EQUIPMENT SHALL BE LAYED OUT BY THE CONTRACTOR AND CONFIRM BY CONTRACT ADMINISTRATOR.
8. IT IS THE RESPONSIBILITY OF THE CONTRACTOR TO CONFIRM THE ADEQUACY OF THE EXISTING STREET LIGHT SERVICE, SERVICE BASE, CONDUIT AND CONDUCTORS AND MAKE ALL NECESSARY REPAIRS TO ADEQUATELY COMPLETE ALL CONNECTIONS INTO THE EXISTING STREET LIGHT SYSTEM.



CHECK BEFORE YOU DIG
CONTRACTOR SHALL REFER TO MUNICIPAL RECORD / CIVIL DESIGN DRAWINGS FOR ALL OTHER UTILITIES, SERVICE LOCATIONS, AND DETAILS. THE EXACT LOCATION OF THESE UTILITIES SHALL BE DETERMINED ON SITE BY THE CONTRACTOR.

DMD & Associates Ltd.
18 19044 95A Avenue
Surrey, BC, Canada V4N 4P2
www.dmdeng.com 604/888-9010
office@dmdeng.com Fax 604/888-9011

DESIGNED	
DRAWN	
CHECKED	
DATE	
SCALE:	AS SHOWN
SEAL	

No.	DATE	BY	CHK'D	REVISION

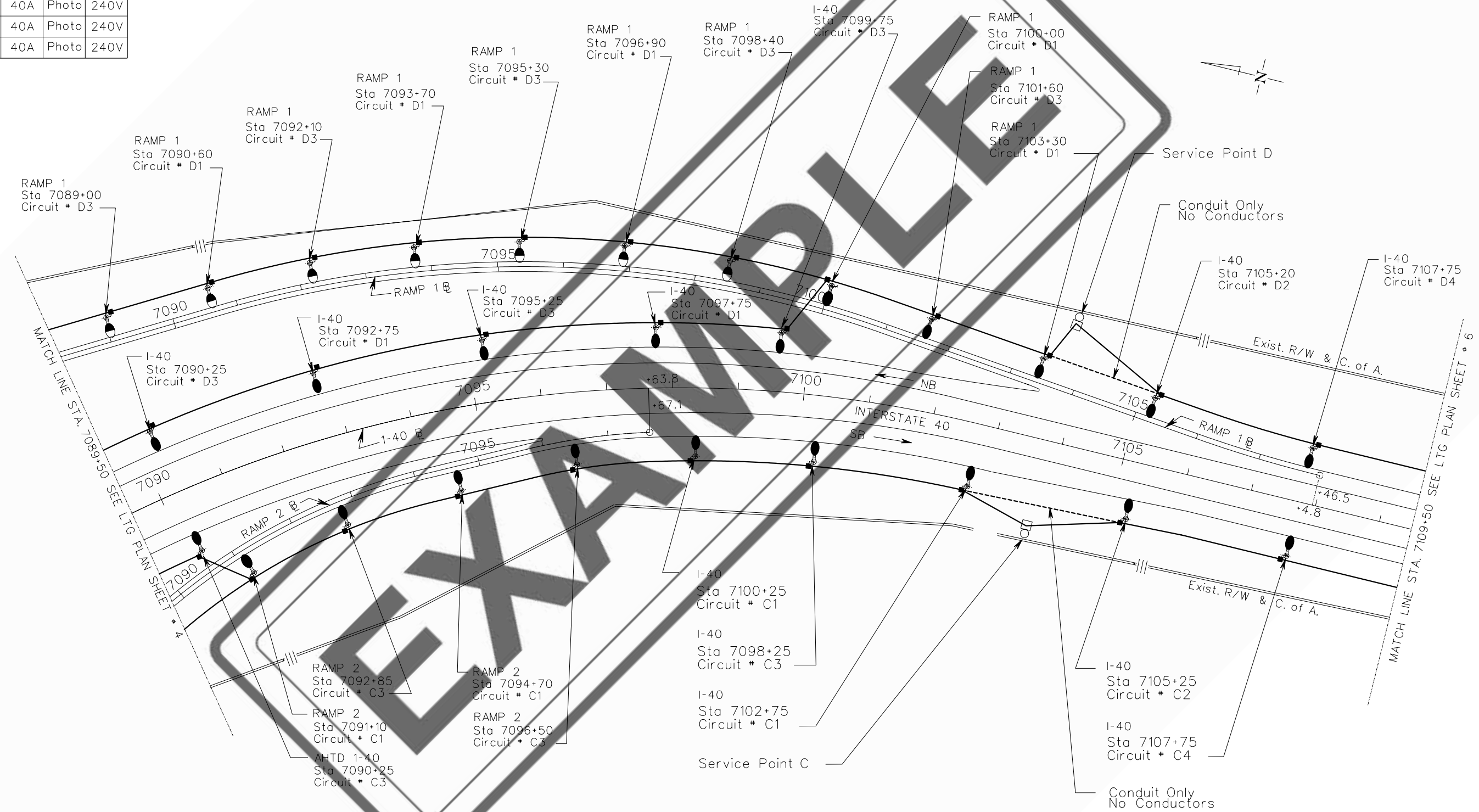
PATHWAY LIGHTING

DRAWING REFERENCE	PROJECT No.	SHEET No. APPENDIX C-6	REVISION
-------------------	-------------	----------------------------------	----------

SERVICE POINT ASSEMBLY

SERVICE POINT NUMBER	CIRCUIT NUMBER	BREAKER SIZE (AMPS)	TYPE CONTROL	VOLTAGE
C	C1	40A	Photo	240V
C	C1	40A	Photo	240V
C	C1	40A	Photo	240V
C	C1	40A	Photo	240V
D	D1	40A	Photo	240V
D	D1	40A	Photo	240V
D	D1	40A	Photo	240V
D	D1	40A	Photo	240V

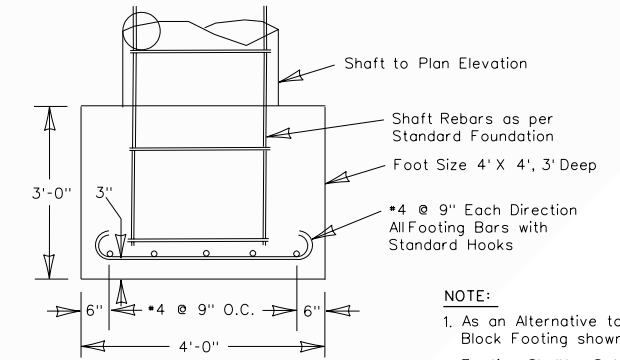
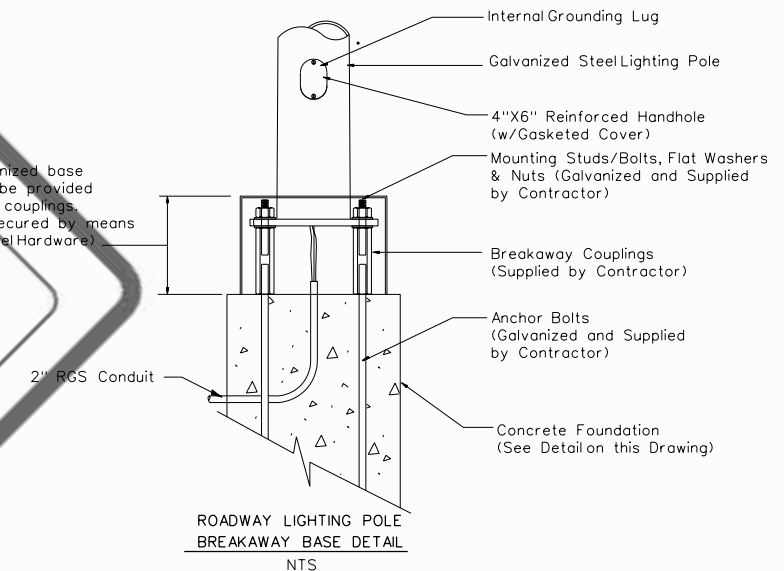
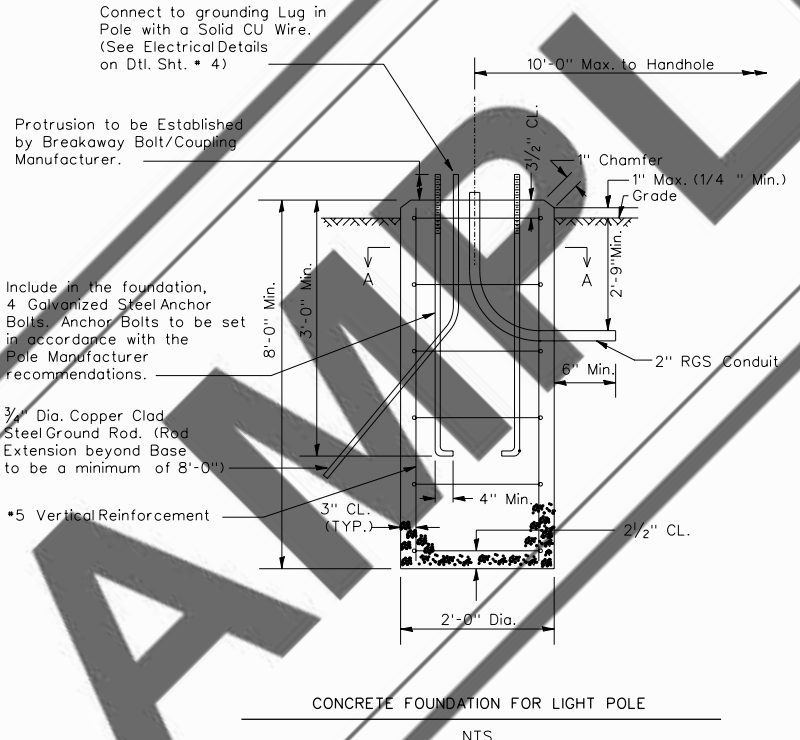
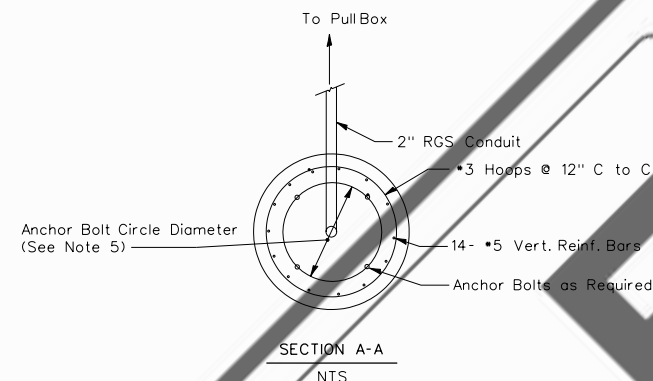
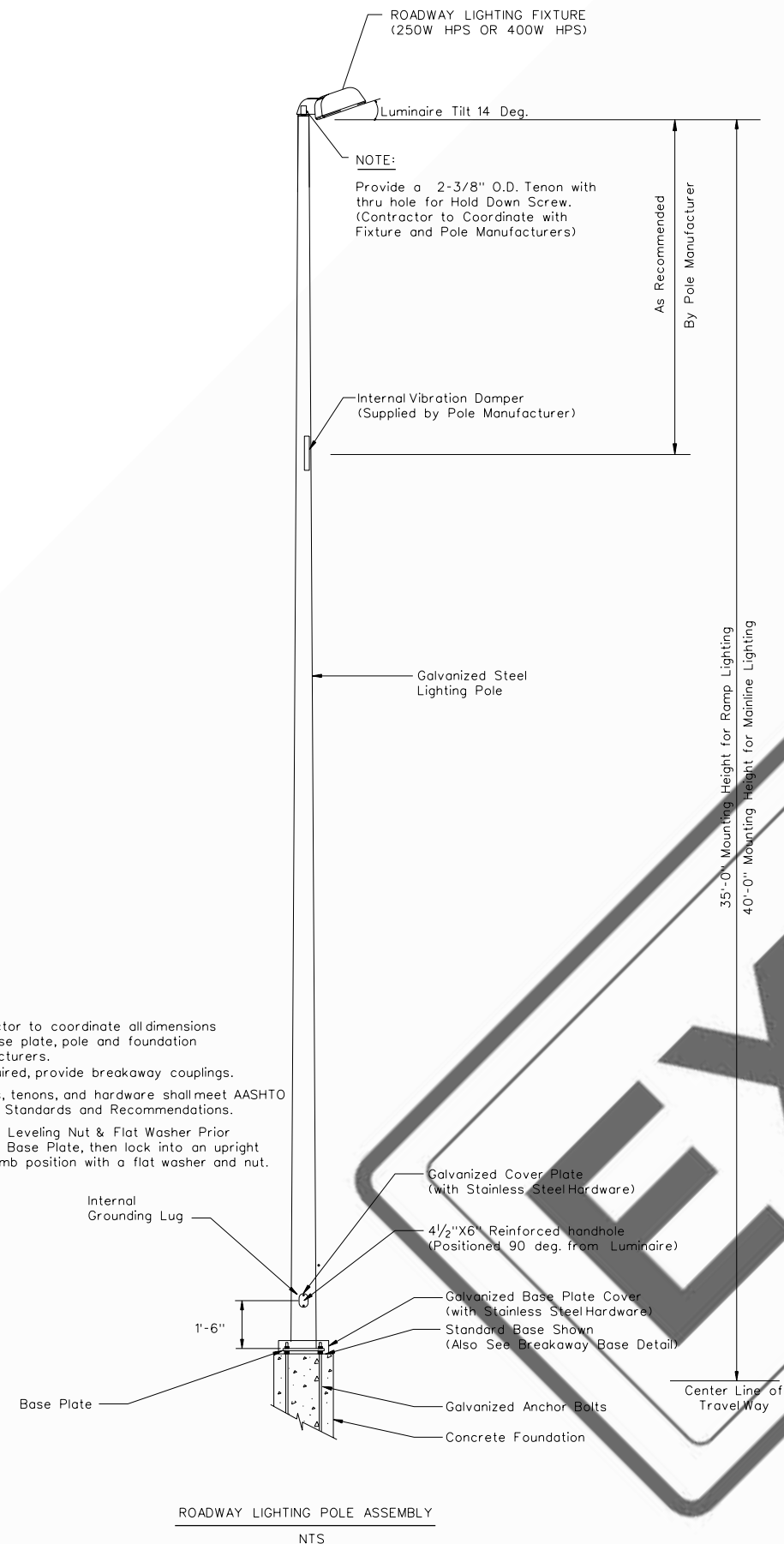
DATE REVISED	DATE FILMED	DATE REVISED	DATE FILMED	FED. RD. DIST. NO.	STATE	FED. AID PROJ. NO.	SHEET NO.	TOTAL SHEETS
				JOB NO.				



See General Lighting Sheets 1 & 2 for Abbreviations, Symbols, Notes and a Summary of Quantities.

Conduit Legend
 ——— 3" PVC with 4 #2/0 AL., 1" 2/0 AL. GND.
 3" Conduit with Conductors as Indicated.
 - - - - - Existing 2" Conduit with Existing Conductors

DATE REVISED	DATE FILMED	DATE REVISED	DATE FILMED	FED. RD. DIST. NO.	STATE	FED. AID PROJ. NO.	SHEET NO.	TOTAL SHEETS
JOB NO.								



- NOTE:
1. Contractor to coordinate all dimensions with base plate, pole and foundation manufacturers.
 2. As required, provide breakaway couplings.
 3. All Poles, tenons, and hardware shall meet AASHTO and UL Standards and Recommendations.
 4. Install a Leveling Nut & Flat Washer Prior to Pole Base Plate, then lock into an upright and plumb position with a flat washer and nut.

- FOUNDATION NOTES:
1. Concrete for light pole structure foundation shall have a minimum of 30MPa. All reinforcement shall be deformed steelbars and conform to ASTM A615M, Grade 400M.
 2. Contractor shall provide Pre-Cast or Cast-in-Place Foundations.
 3. Provide Watertight Caps for any unused conduits.
 4. The Contractor shall coordinate with the Lighting Fixture, Breakaway Coupling/Bolt, Foundation and Pole Manufacturers to ensure proper fit of all components.
 5. Dimensions and size of Anchor Bolts, including Bolt Circle, to be verified by Light Pole Manufacturer. Threaded end of Anchor Bolts to be Galvanized in accordance with ASTM A153, Anchors Bolts, Fasteners, Nuts and Washers shall conform to ASTM A449.
 6. Assume that reinforcing steel is all interconnected via tie wrapping.
 7. Contractor to coordinate the appropriate dimension to assure the minimum conduit depth is 2'-9" when leading to pullbox. (See Dtl. Sht # 2)

- NOTES:
1. All poles are to have Breakaway Couplings unless noted otherwise.
 2. Install a Flat Washer Between Breakaway Coupling and Pole Base Plate and between the pole base plate and nut.
- NOTE:
1. As an Alternative to a Drilled Shaft the Block Footing shown may be used.
 2. Footing Shall be Set 1' into Solid Rock.
 3. Conduit, Ground Rod and Anchor Bolts as per Standard Foundation Detail.

DATE REVISED	DATE FILMED	DATE REVISED	DATE FILMED	FED. RD. DIST. NO.	STATE	FED. AID PROJ. NO.	SHEET NO.	TOTAL SHEETS
				JOB NO.				

Mounting height of luminaires to be maintained at 40'-0" above the finished roadway.

Mounting Plates

Utilize 3" RGS Along Bridge Structure to Pullbox then Transition to 2" RGS leading to Conduit Sleeve in Bridge Deck, and Extend into Pole using 90 degree conduit fitting.

Hinged Covered Boxes Type YW, Cast Iron w/External Mounting Ears 24" x 16" x 6".

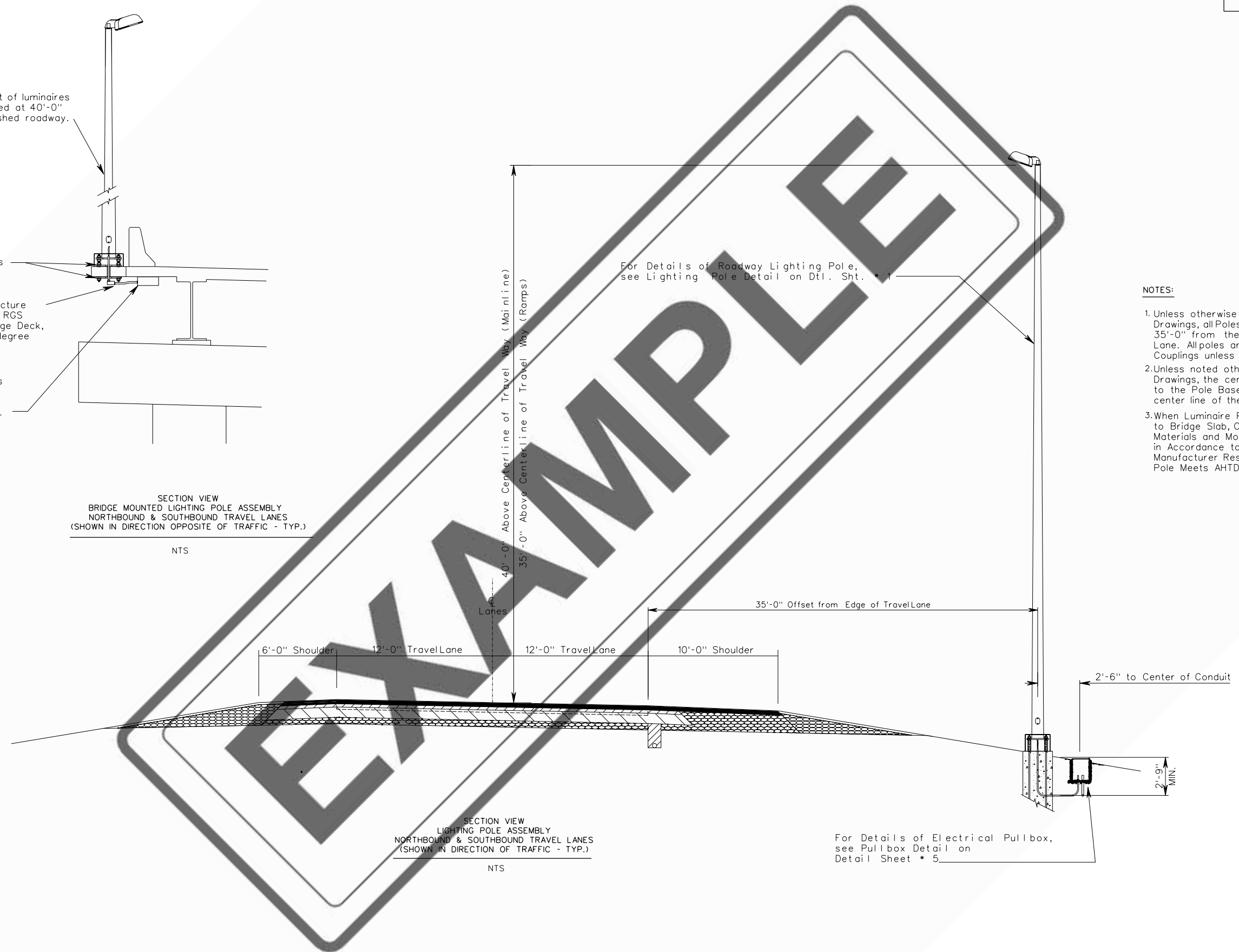
SECTION VIEW
BRIDGE MOUNTED LIGHTING POLE ASSEMBLY
NORTHBOUND & SOUTHBOUND TRAVEL LANES
(SHOWN IN DIRECTION OPPOSITE OF TRAFFIC - TYP.)

NTS

For Details of Roadway Lighting Pole, see Lighting Pole Detail on Dtl. Sht. # 1

NOTES:

1. Unless otherwise noted on the Lighting Plan Drawings, all Poles are to be positioned 35'-0" from the edge of the outer Travel Lane. All poles are to have Breakaway Couplings unless noted otherwise.
2. Unless noted otherwise, on the Lighting Plan Drawings, the centerline of the Conduit Leading to the Pole Base shall be located 2'-6" to the center line of the pole base.
3. When Luminaire Pole Assemblies are Mounted to Bridge Slab, Contractor to provide Necessary Materials and Mounting Hardware to Install Pole in Accordance to Manufacturers Recommendations. Manufacturer Responsible for ensuring that the Pole Meets AHTD and AASHTO Standards.

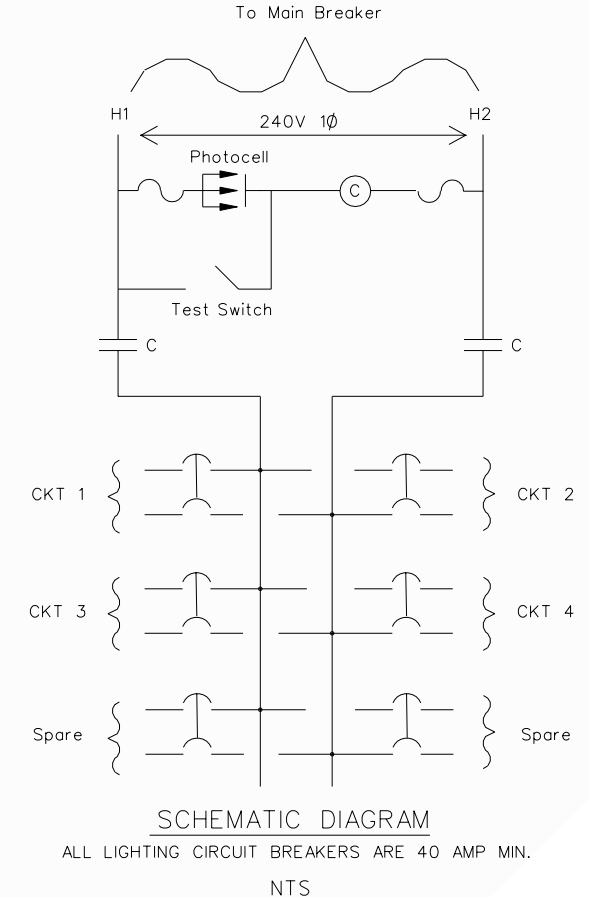
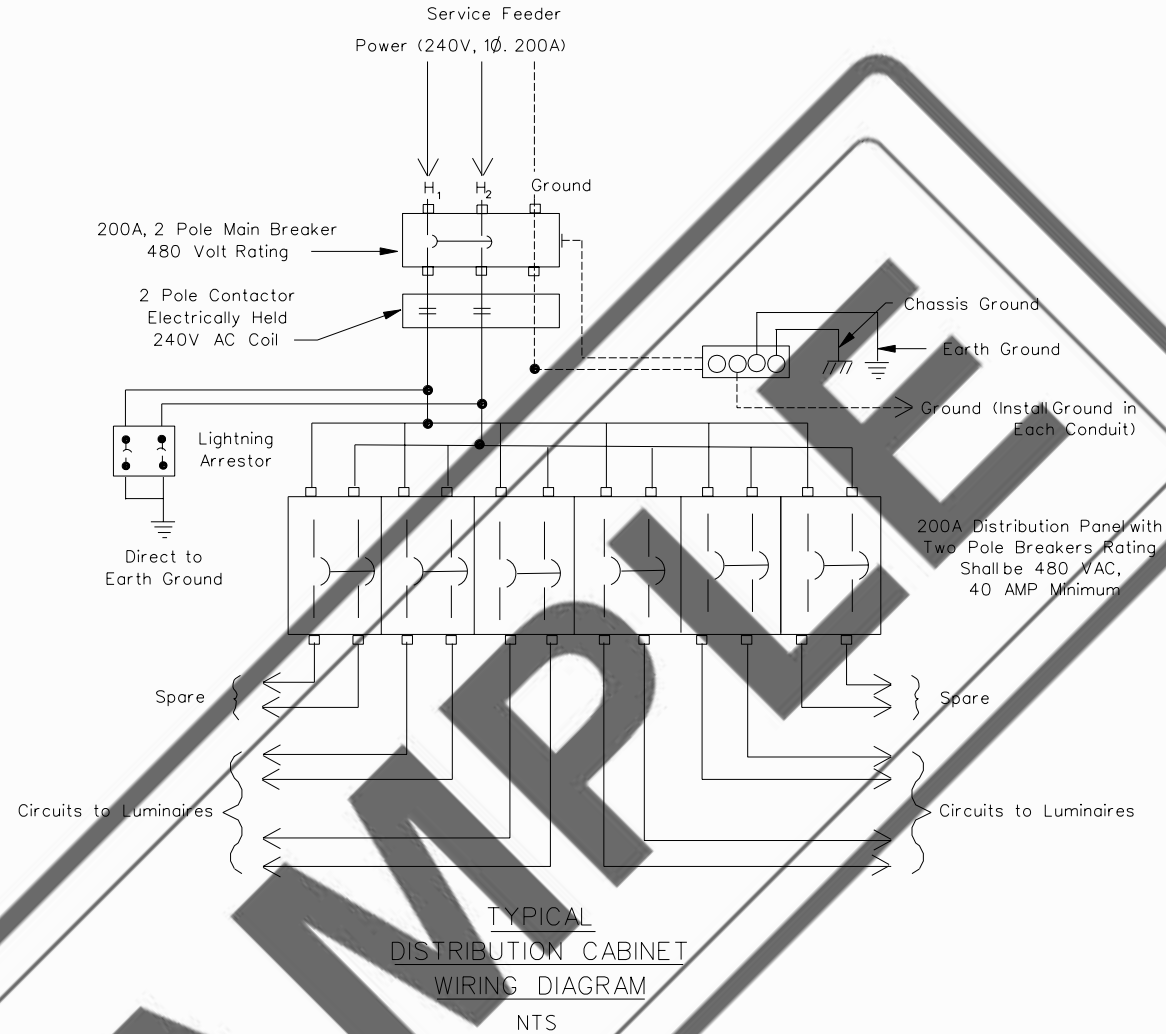
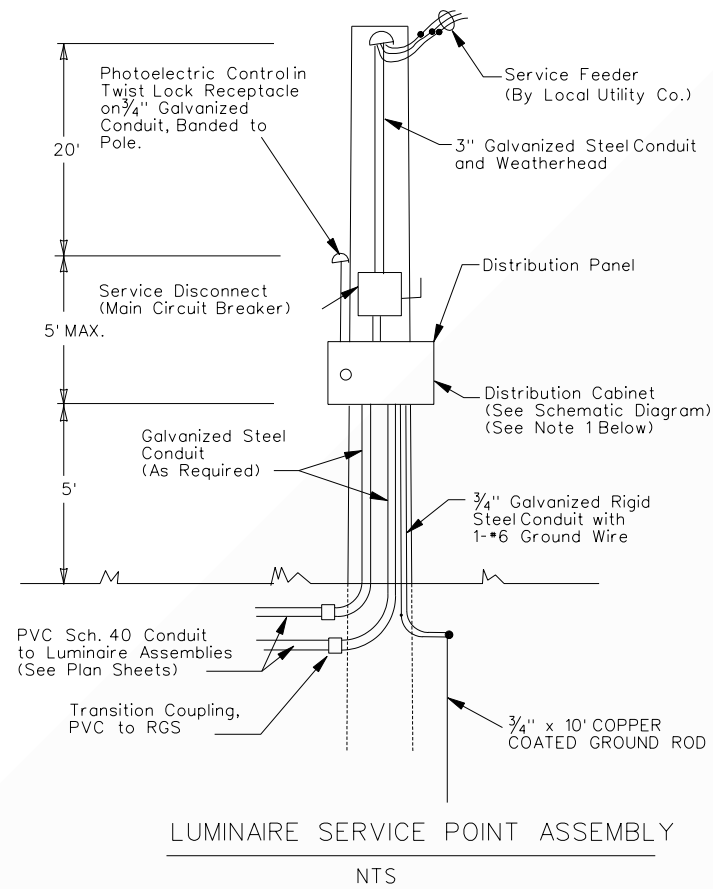


SECTION VIEW
LIGHTING POLE ASSEMBLY
NORTHBOUND & SOUTHBOUND TRAVEL LANES
(SHOWN IN DIRECTION OF TRAFFIC - TYP.)

NTS

For Details of Electrical Pullbox, see Pullbox Detail on Detail Sheet # 5

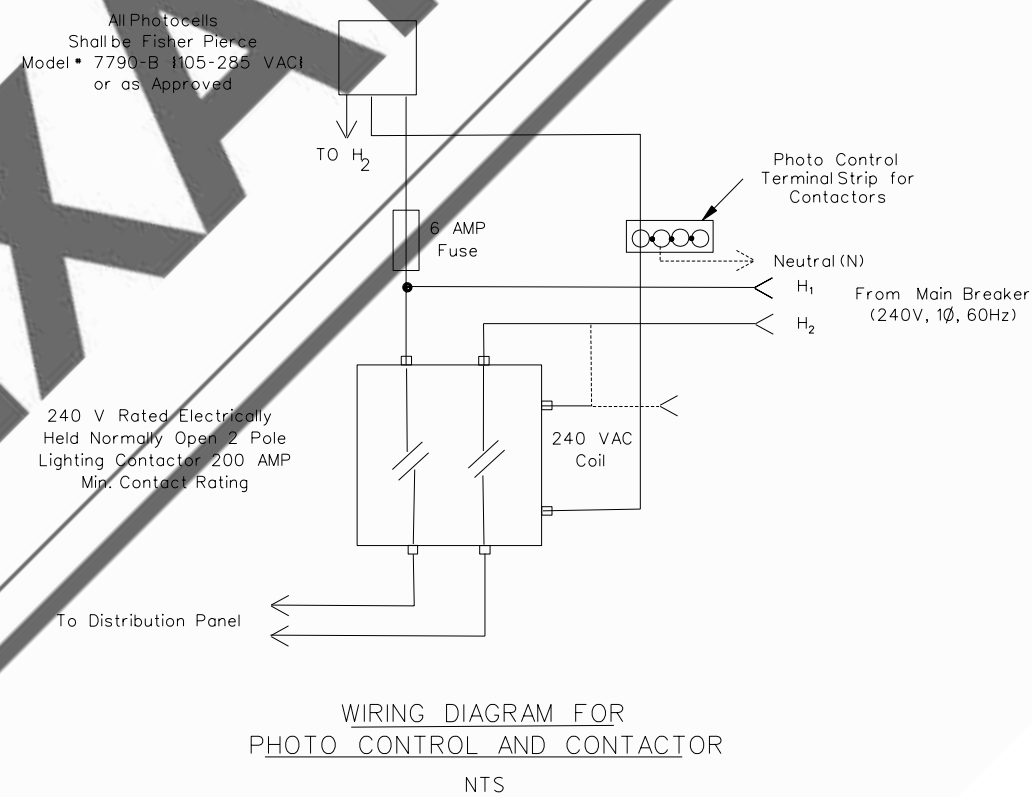
DATE REVISED	DATE FILMED	DATE REVISED	DATE FILMED	FED. RD. DIST. NO.	STATE	FED. AID PROJ. NO.	SHEET NO.	TOTAL SHEETS
JOB NO.								



Service Point	Load (W)	APPROX. STATION LOCATIONS
A	17503	7067+50
B	17657	7067+50
C	17998	7103+25
D	19198	7103+00
E	21782	7166+00
F	25314	7170+00
G	10426	7270+00
H	22137	7271+00
I	12075	7230+00

NOTE :

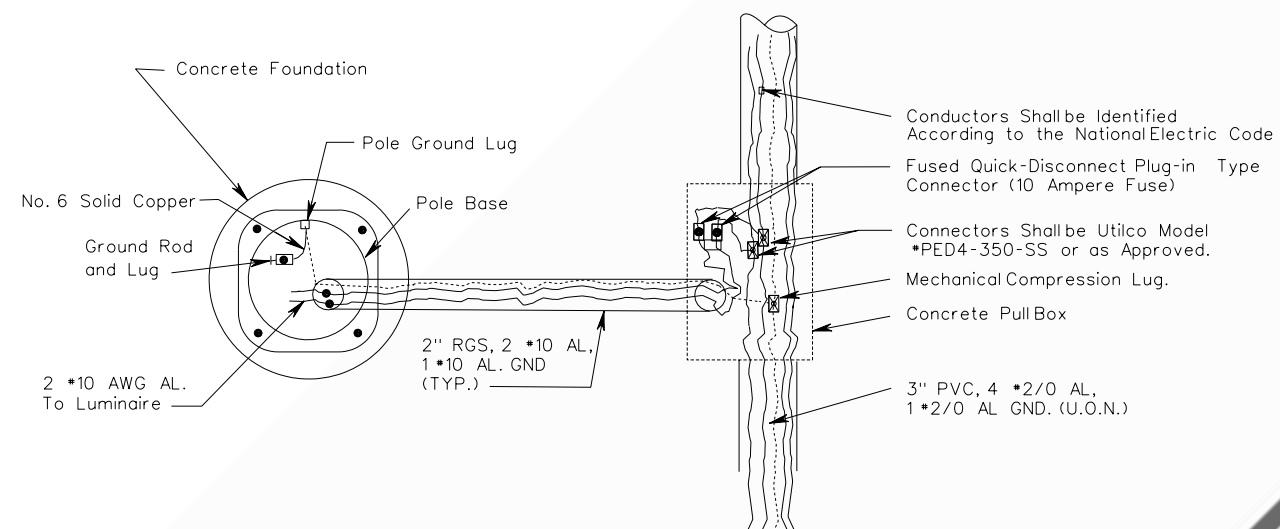
- As an alternative, Contractor may utilize a base mounted distribution cabinet of an approved design.
- Nylon Bushings shall be inserted into all galvanized steel conduit entering cabinets.
- Utilize existing poles at existing service points. All other equipment shall be new.



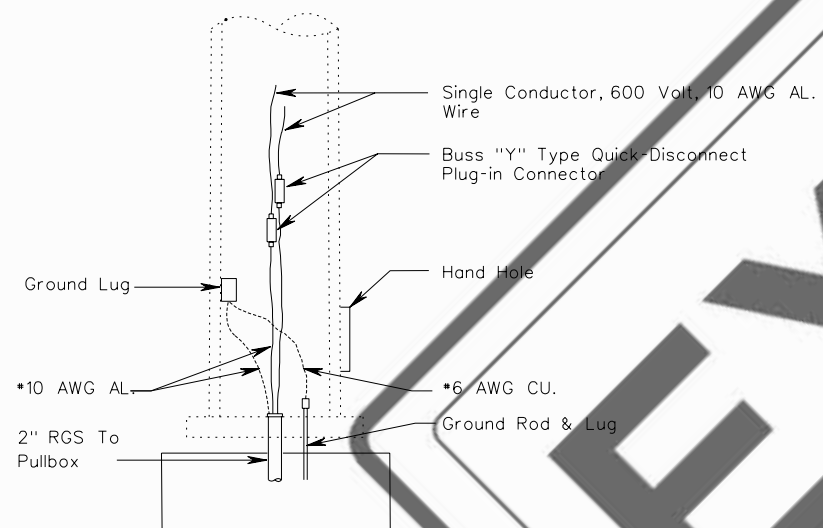
NOTE :

Contactors shall be arranged such that control coil failure results in closure of contacts.

DATE REVISED	DATE FILMED	DATE REVISED	DATE FILMED	FED. RD. DIST. NO.	STATE	FED. AID PROJ. NO.	SHEET NO.	TOTAL SHEETS
JOB NO.								



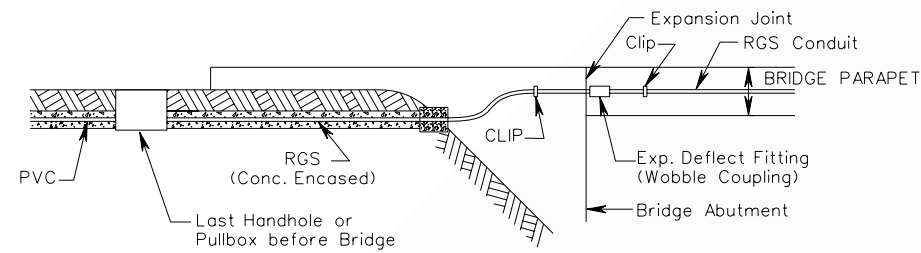
POLE FOUNDATION/PULL BOX
WIRING DETAIL
NTS



DETAIL - POLE WIRING
NTS

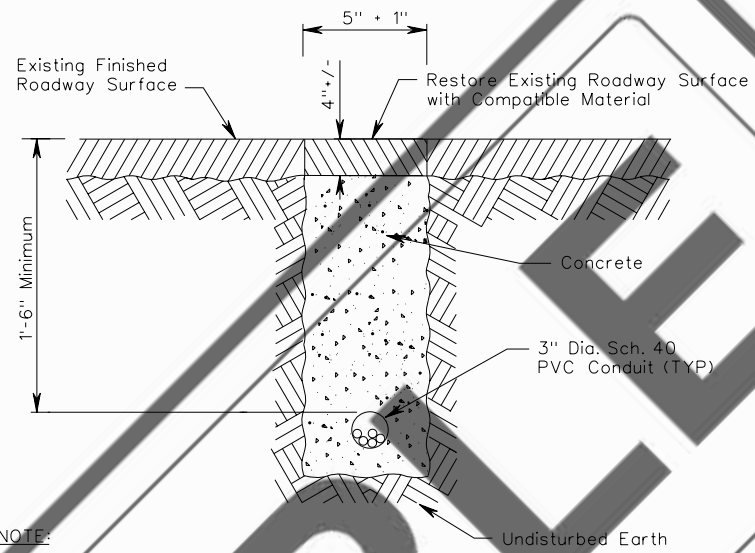
EXAMPLE

DATE REVISED	DATE FILMED	DATE REVISED	DATE FILMED	FED. RD. DIST. NO.	STATE	FED. AID PROJ. NO.	SHEET NO.	TOTAL SHEETS
				JOB NO.				



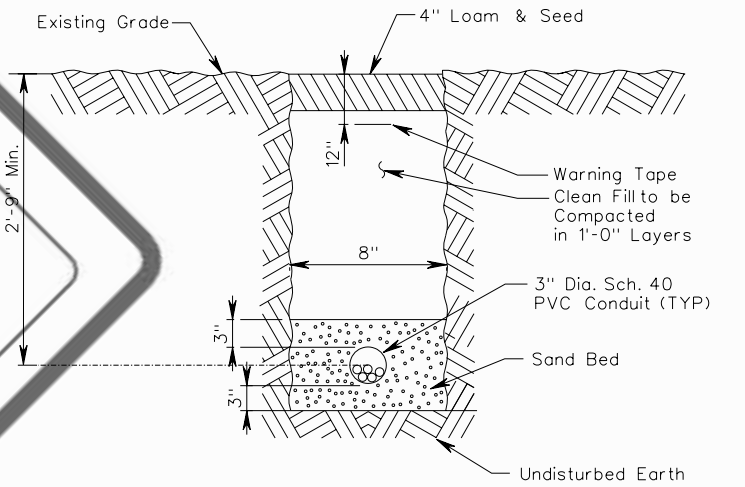
NOTE:
Same detail in reverse will apply at other end of Bridge.

DETAIL 1
TRANSITION OF BURIED CONDUIT TO EXPOSED CONDUIT AT BRIDGES
NTS

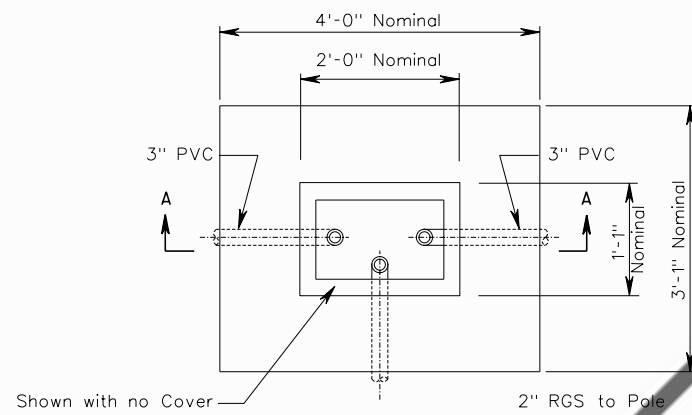


NOTE:
Trench Shall be Saw Cut at Surface of Roadway

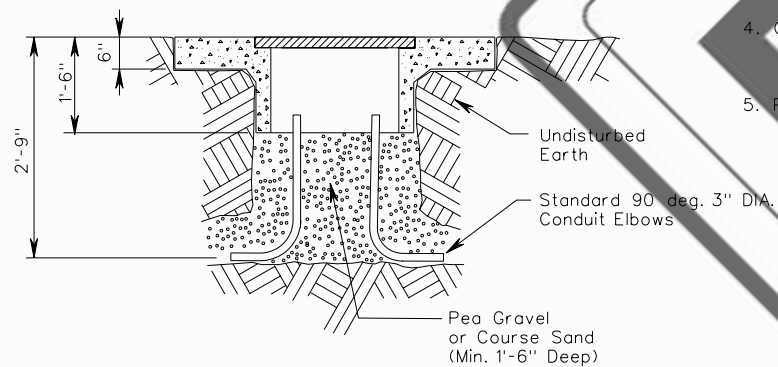
DETAIL 2
ROADWAY TRENCHING DETAIL
NTS



DETAIL 3
TYPICAL TRENCHING AND BACKFILLING IN EARTH
NTS



PLAN VIEW
NTS

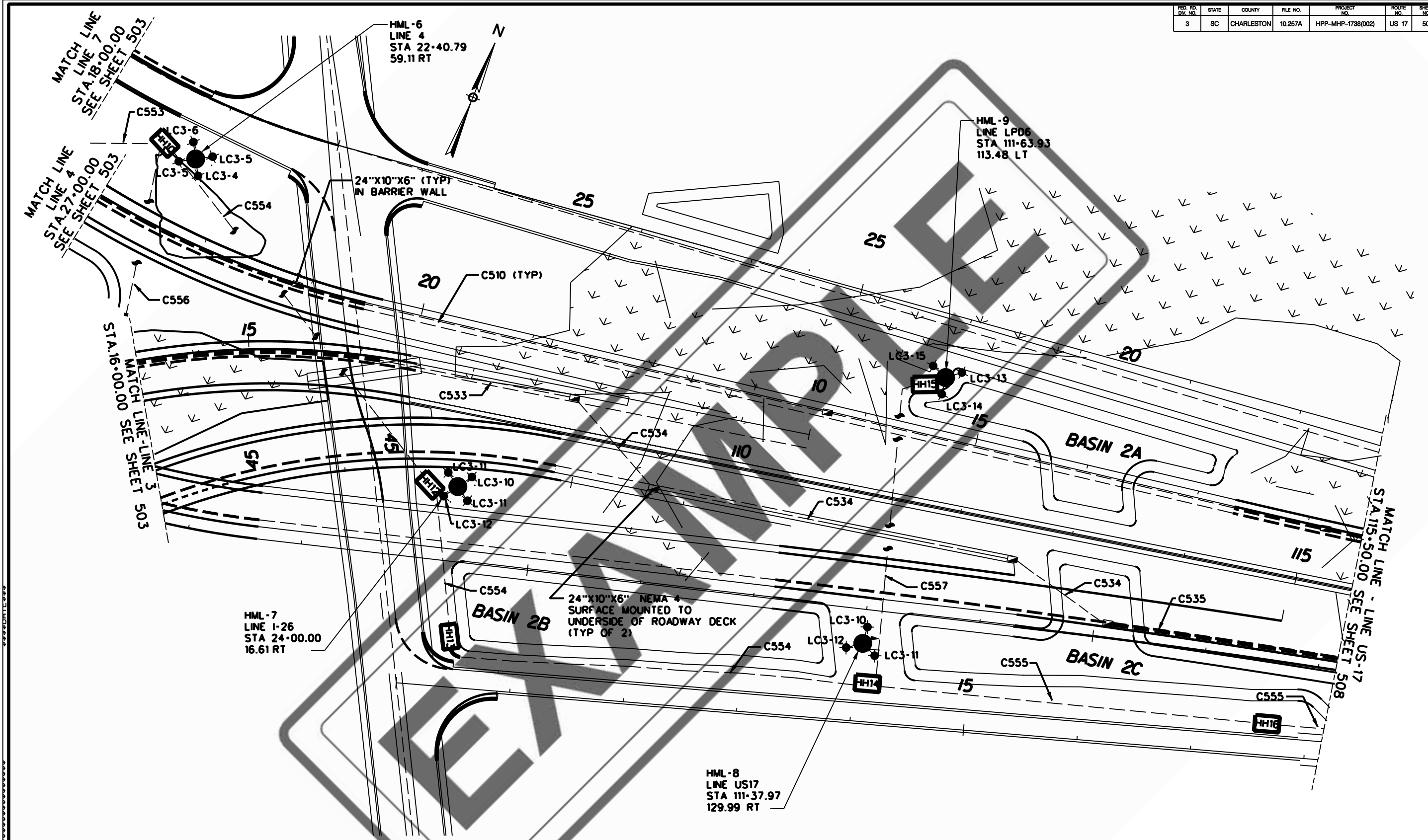


SECTION A-A
PULL BOX
NTS

NOTE:

1. Pullboxes Shall be of Precast, Monolithic Polymer Concrete.
2. They Shall be Designed for a Maximum Wheel Load of 12,000 lbs.
3. Pullbox Opening Shall be 1'-1" x 2'-0" Nominal.
4. Cover Shall be Heavy Duty, Bolt-Down type, with a Minimum of 2 Penta-Head Stainless Steel Bolts.
5. Pullbox Depth Shall be 1'-6".

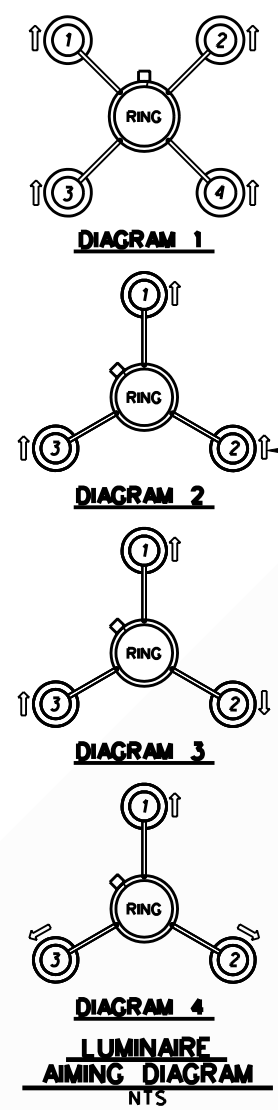
FED. RD. DIV. NO.	STATE	COUNTY	FILE NO.	PROJECT NO.	ROUTE NO.	SHEET NO.
3	SC	CHARLESTON	10.257A	HPP-MHP-1738(002)	US 17	507



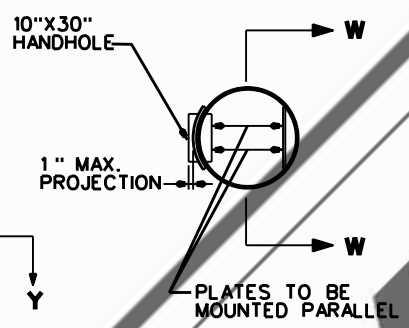
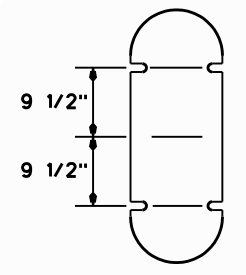
0	G.PATINO	12/23/02	ISSUE FOR CONSTRUCTION
REV. NO.	BY	DATE	DESCRIPTION OF REVISION
DESIGNED BY:	JLW/JPK	DATE:	12/23/02
DRAWN BY:	KWM	DATE:	12/23/02
CHECKED BY:	M. VAN DERE	DATE:	12/23/02



SOUTH CAROLINA DEPARTMENT OF TRANSPORTATION
REPLACEMENT OF THE COOPER RIVER BRIDGE
CHARLESTON INTERCHANGE LIGHTING PLAN
SHEET PT-RD-EL-507 SCALE: 1"=40'



GALVANIZED TENON (WELDED TO POLE BY MANUFACTURER)



GALVANIZED STEEL LIGHTING POLE

LOWERING DEVICE ACCESS HANDHOLE 10"X30" PROVIDED WITH GALVANIZED COVER PLATE SECURED WITH STAINLESS STEEL HARDWARE.

PROVIDE INTERNALLY MOUNTED GROUND LUG SUITABLE FOR AN EXOTHERMICALLY WELDED CONNECTION TO POLE.

GALVANIZED BASE PLATE COVER (WITH STAINLESS STEEL HARDWARE)

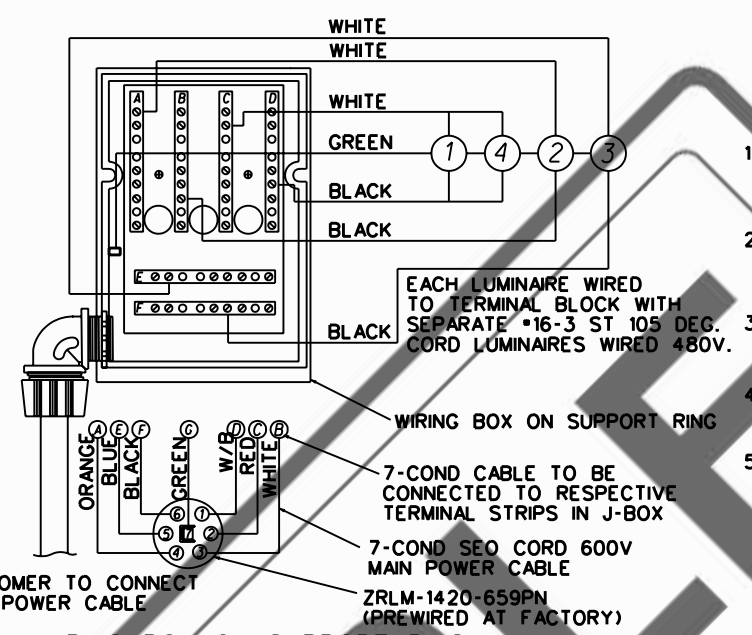
BASE PLATE: (NOTE: ANCHOR BOLT CIRCLE DIMENSION SHALL BE COORDINATED WITH FOUNDATIONS IN THE FIELD. CONTRACTOR TO COORDINATE ALL DIMENSIONS WITH BASE PLATE AND POLE.)

HIGHMAST LIGHTING POLE
NTS

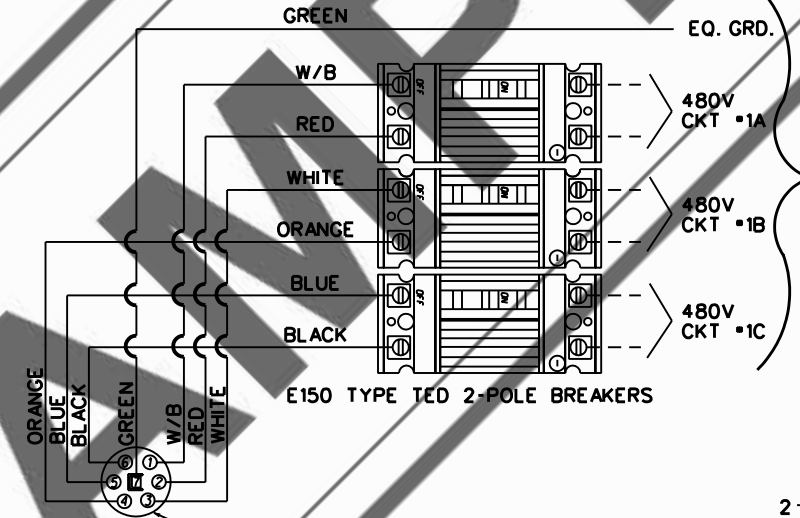
GALVANIZED ANCHOR BOLTS (AS REQUIRED PER STRUCTURAL DRAWINGS)

CONCRETE FOUNDATION (AS REQUIRED PER STRUCTURAL DRAWINGS)

NOMINAL OVERALL HEIGHT - 120'-0" TO 175'-0"



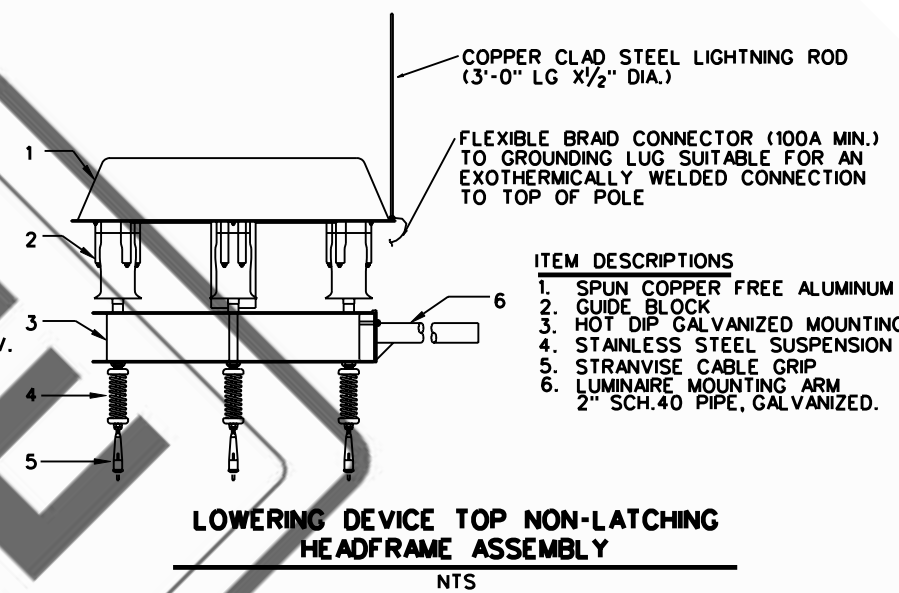
WIRING BOX ON SUPPORT RING
NTS



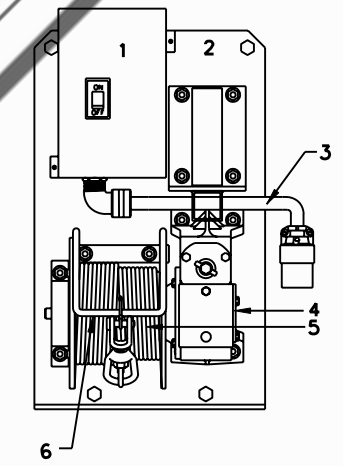
CIRCUIT BREAKER BOX AT POLE BASE
NTS



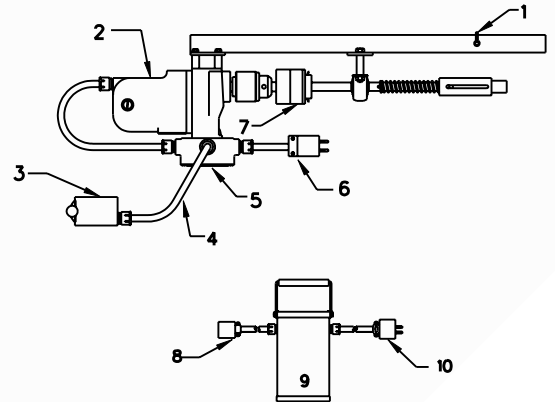
MAINTENANCE PLUG
NTS



- ITEM DESCRIPTIONS**
1. SPUN COPPER FREE ALUMINUM COVER
 2. GUIDE BLOCK
 3. HOT DIP GALVANIZED MOUNTING RING
 4. STAINLESS STEEL SUSPENSION SPRING
 5. STRANVISE CABLE GRIP
 6. LUMINAIRE MOUNTING ARM 2" SCH.40 PIPE, GALVANIZED.



- ITEM DESCRIPTIONS**
1. CIRCUIT BREAKER(S) AND ENCLOSURE.
 2. WINCH PLATE
 3. POWER SUPPLY CORD AND CONNECTOR MIN. 5 FT LENGTH TO MATE WITH MOTOR AND TEST INLET.
 4. WINCH WITH INTERNAL DRAG BRAKE.
 5. WINCH CABLE (STAINLESS STEEL 16-6 AIRCRAFT 7X19 FLEX CABLE) LENGTH IS POLE HEIGHT+6FT.
 6. STAINLESS STEEL CABLE GUARD.



- ITEM DESCRIPTION**
1. HITCH PIN
 2. REVERSIBLE ELECTRIC MOTOR (120V)
 3. REVERSING SWITCH
 4. CONTROL CORD 25FT LENGTH
 5. WIRING HOUSING
 6. PLUG TO MATE TO CONNECTOR IN POLE BASE OR TRANSFORMER SECONDARY
 7. TORQUE LIMITER COUPLING
 8. CONNECTOR TO MOTOR FROM 120V TRANSFORMER SECONDARY
 9. STEPDOWN TRANSFORMER 1.5 KVA FOR 240V, 277V, 480V, 600V 2.0 KVA FOR 208V
 10. PLUG TO CONNECTOR IN POLE BASE FROM TRANSFORMER PRIMARY



0	G. PATINO	122302	RELEASED FOR CONSTRUCTION
REV. NO.	BY	DATE	DESCRIPTION OF REVISION
DESIGNED BY:	JLW/JPK	DATE	122302
DRAWN BY:	JPK	DATE	122302
CHECKED BY:	M. VANDEREE	DATE	122302
		DATE	122302
		DATE	122302
		DATE	122302



SOUTH CAROLINA DEPARTMENT OF TRANSPORTATION
REPLACEMENT OF THE COOPER RIVER BRIDGES

HIGH MAST LIGHTING DETAILS